



# CAMPSMOUNT ACADEMY



## Progression and Careers Prospectus 2019-2020



# Message From the Head of Post 16



Leading our Post 16 provision is a real privilege. Working with young people who are keen to develop their potential is the most amazing job in the world, and I am keen to see our expanding provision continue on it's exciting journey.

The Post 16 team are eager to continue offering the independent and supportive learning environment you need, to reach your full potential. Our aim is to develop leaders of the future, who can progress successfully onto their future pathway, and aspire to be the best.

Outcomes for our students are very important and we offer a broad curriculum. This prospectus outlines an exciting range of subjects on offer, including some new ones for 2019! Making decisions about the future can be daunting, however, with the prospectus information, and the support and guidance of the Post 16 staff, we can help you make informed decisions.

Our Post 16 facilities continue to be highly regarded by our students, providing the perfect atmosphere to learn. You can enjoy your own catered cafeteria, access to the school's Wi-Fi, a large number of computers for private study, and quiet areas to study, complete work and revise. These outstanding facilities coupled with the excellent teaching provided by our experienced staff, is the perfect combination for your success.

I wish you the very best of luck in your GCSE studies and look forward to welcoming you into our Post 16 in September 2020.

Miss D Hudson, Assistant Principal and Head of Post 16

---

## YOUR CURRICULUM

Our curriculum is based around each individual student to meet your learning needs, now and in the future, and to build on your strengths and interests of today. We will work with you to ensure that you are following the right combination of courses to suit your learning and assessment style. The entry requirements for each suite of courses are different, and some have particular criteria based on your GCSE performance. Your curriculum will be decided in partnership with our experienced staff following your application and personal interview. The courses section of this prospectus gives a guide to each course, and you can find out more by attending our Post 16 Open Evening and speaking to our subject leaders.

The curriculum includes the following:

**A Level**  
**Applied General Qualifications (Vocational) Level 3 \***  
**Technical Qualifications (Vocational) Level 3.**  
**GCSE Maths and/or English resit should you require it.**

\*Some vocational qualifications will be available in a range of A Level equivalents. E.g.

One (6 Units),

One and a half (9 Units),

Three (18 Units)

NB: A Level exams take place at the end of the second year. Vocational examinations will take place in January and May/June of Y12 and Y13. For more details speak to subject staff.

**You will be asked to select courses of any combination to meet the curriculum requirements of three Level 3 subjects.**

# COURSES AND REQUIREMENTS

To enter Post 16 you will require 5+ GCSEs at Grade 5 or above.

## A LEVEL COURSES

SUBJECT	SPECIFIC ENTRY REQUIREMENTS	
ART	Grade 6 in GCSE Art.	
BIOLOGY	Grade 6 in GCSE Science.	
CHEMISTRY	Grade 6 in GCSE Science.	
ENGLISH LITERATURE	Grade 6 in GCSE English Language and English Literature.	
HISTORY	Grade 6 in GCSE History and/or English.	
MATHEMATICS	Grade 7 in GCSE Maths.	
CORE MATHEMATICS	Grade 6 in GCSE Maths.	
PHOTOGRAPHY	Grade 6/Merit in GCSE Art and/or IT.	
PHYSICS	Grade 6 in GCSE Science.	

## VOCATIONAL COURSES

SUBJECT	SPECIFIC ENTRY REQUIREMENTS	
APPLIED SCIENCE	Grade 5 in GCSE Science.	
BUSINESS STUDIES	Grade 5 in GCSE Business would be an advantage.	
PERFORMING ARTS	Merit in L2 Sport/Dance, ability to play an instrument or sing would be an advantage.	
HEALTH & SOCIAL CARE	Health & Social Care L2 would be an advantage.	
ICT	Merit in OCR National.	
MEDIA	Grade 4 in GCSE English.	
SPORT	Merit L2 Sport	



# A-Level Courses

## Art and Design

### Subject Overview

The popularity of Art and Design at A Level attracts a number of students wishing to further develop their portfolio from GCSE. Students work ambitiously in new materials, such as oil and acrylic, printing, photography and three dimensional media. This generates an exciting mix of young talent, which stimulates a range of individual and creative work. Opportunities are available to enrich learning through trips such as life drawing sessions and gallery visits.

### How is the course assessed

- Component 1- 60% course work, 18% of this is the Personal Investigation (The personal study consists of a critical and analytical written piece of a minimum 1000 words).
- Component 2- 40% externally set examination.

### Progression Routes and Careers

77.2% of creative graduates went directly into employment. Possible careers include: Graphics, Fine Art, Illustration, Jewellery, Printmaking, Textiles/Surface Pattern, Photography, Fashion, Interior Design, Ceramic Design, Product Design, Crafts, Animation, Architecture and many others.



## Biology

## A-Level Course

### Subject Overview

You will study a broad & stimulating curriculum consisting of 8 units over the 2 years that are relevant to modern day science. You will undertake a mixture of practical & theoretical work which will be assessed through external examinations.

### How is the course assessed

You will complete 3 exam papers which will test:

- Paper 1: Biological molecules, Cell Structure and Division, Cell Membranes, Cells and the Immune System, Exchange and Transport.
- Paper 2: DNA, RNA and Protein Synthesis, Diversity, Selection and Classification, Photosynthesis, Respiration and Energy, Homeostasis and Control, Genetics and Population Interactions.
- Paper 3: A combination of all of the above.

Practical skills are assessed in all 3 papers.

### Progression Routes and Careers

Biology is a well-recognised science A Level that will be accepted by a wide range of university degrees. It is often a requirement for medical based degrees, including nursing, environmental studies, agriculture, zoology and other animal-based degrees.





# Chemistry

## Subject Overview

Chemistry is the study of materials; what they are made of, how they interact with each other and their surroundings and the role they play in living things. As such Chemistry occupies a central position in science, linking disciplines from mathematics to medicine and affects every aspect of our lives.

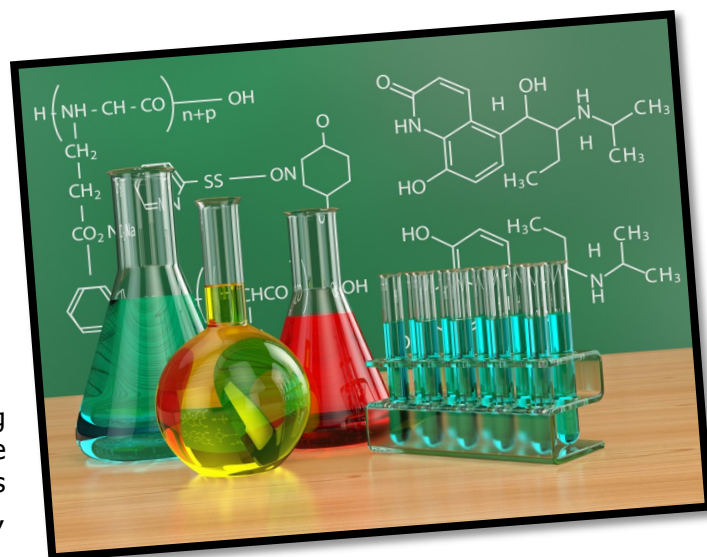
This two year qualification covers a range of concepts from all three branches of chemistry; organic, inorganic and physical chemistry.

## How is the course assessed

The AS course is assessed through two exam papers at the end of year 12 and the A Level course through three exam papers at the end of year 13. The development of practical skills will be assessed through these exams.

## Progression Routes and Careers

You can continue your studies to degree level studying Chemistry, Medicinal Chemistry, Biochemistry etc. Also there are many professions for which an A Level in Chemistry is essential, such as Medicine, Dentistry, Chemical Engineering, Nursing and Physiotherapy.



## A-Level Course

## A-Level Course

### Subject Overview

During this course, students will explore 'Aspects of Tragedy' and 'Aspects of Social and Political Protest'. They will read a range of texts from Othello by William Shakespeare, to The Handmaid's Tale by Margaret Atwood. They will also complete two pieces of coursework, centred around literary theories like Marxism and Post Colonial Theory.

### How is the course assessed

The students are expected to further build on their skills developed at KS4. This includes being able to select, retrieve and explain key information from the texts studied, analyse authorial methods, show an awareness of the context that writers were writing about, make links to wider literature and engage in perceptive debate.

### Progression Routes and Careers

There are many routes when studying a course such as this. Students may choose to complete a dual degree at University with the view of becoming a journalist, teacher or editor.



## English Literature



# A-Level Courses

# History

## Subject Overview

A Level History at Campsmount follows the AQA specification and covers two examination assessed topics. Paper 1 focuses on the Tudors, 1485-1603 with Germany, 1918-45 on Paper 2. Students also complete a detailed, independent investigation into the civil rights battle in the USA as part of their NEA (non-examined assessment).

These components focus on developing students evaluative and analytical skills in addition to creating a supported argument.

## How is the course assessed

The course is assessed over two exam papers, each lasting 2 hours and 30 minutes. Both papers represent 40% of a student's overall grade and the remaining 20% of a student's grade is from their NEA independent study.

## Progression Routes and Careers

The academic nature of the course, in addition to the research and analytical skills that it develops prepares students for success in a variety of degrees at university in addition to careers in areas such as law, politics and teaching.



# Mathematics

# A-Level Course

## Subject Overview

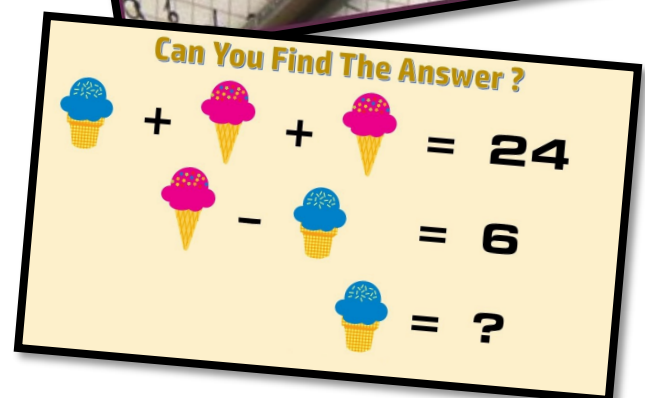
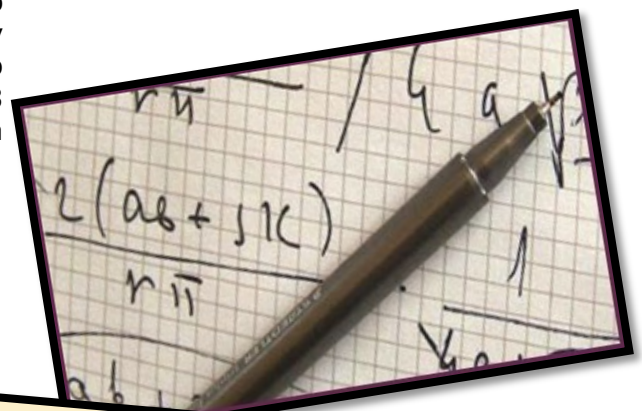
Mathematics is a stimulating and challenging subject which is very highly regarded at Advanced Level. The Year 12 course which can lead to an AS qualification and builds upon all GCSE work, in particularly algebra. Students will also study both Mechanics and Statistics. To obtain the full A Level qualification students will complete the Year 13 course, where the same topic areas as Year 12 are studied to a greater depth.

## How is the course assessed

The A Level course is assessed by 3 written papers lasting 2 hours each. Each paper is equally weighted.

## Progression Routes and Careers

Mathematics is a much sought after qualification for entry to a wide variety of careers and Higher Education courses. Examples include accountancy, law, teaching, engineering, IT, medicine, mathematics and computing.



# Core Mathematics

## A-Level Course

### Subject Overview

Level 3 Core Maths is a course for those who want to keep up their valuable maths skills but are not planning to take AS or A Level Mathematics. It is a Level 3 qualification, equal in points to an AS Level.

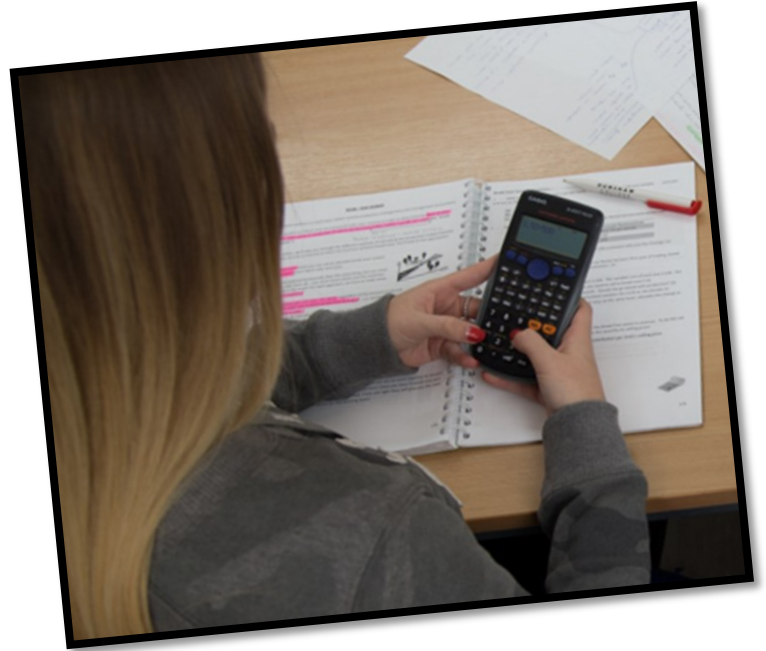
### How is the course assessed

The Level 3 one year course is assessed by 2 papers of 1 hour and 30 minutes each.

Each paper is equally weighted. The course is one year long.

### Progression Routes and Careers

Mathematics is a much sought-after qualification for entry to a wide range of careers and Higher Education pathways. Examples include: Accounting, Financial Adviser, Data Analyst, Teaching, Stockbroker and Trade Analyst. It will also be very beneficial for anyone who may be considering opening a business or going into the wider world of work.



## A-Level Course

# Photography

### Subject Overview

The popularity of Photography at A Level attracts a number of students wishing to be introduced to a variety of experiences exploring a range of photographic techniques, styles and genres, including: portraiture, documentary, photojournalism, landscape and experimental imagery. You will develop technical understanding relating to the composition of images and an ability to explore the different elements of visual language.

### How is the course assessed

- Component 1– 60% course work 18% of this is the Personal investigation (The personal study consists of a critical and analytical written piece of a minimum 1000 words)
- Component 2- 40% externally set examination.

### Progression Routes and Careers

This course allows students to apply for a variety of Higher Education courses including Foundation Degrees, HNDs / BA degrees. Courses such as Documentary Photography, Photographic Art, Fashion Photography, Graphic Design, Animation, Media Studies, Lens Based Media, Film and Television.





# A-Level Courses

# Physics

## Subject Overview

Physics is the study of matter, energy, force and motion, which can challenge our imagination and lead to world-changing discoveries such as lasers and computers. The course itself covers key knowledge and practical skills which will prepare students for physics related degrees at University. As an A Level Physics student you can expect to learn valuable, transferable skills such as problem solving and analysis.

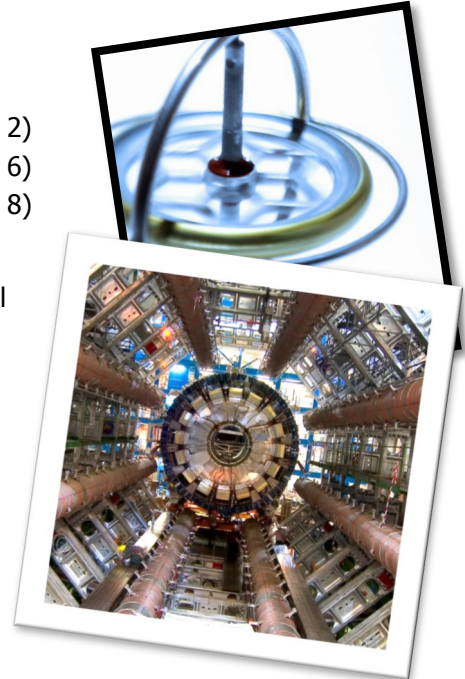
## How is the course assessed

The course involves 8 compulsory units 1) Measurements and their errors 2) Particles and Radiation 3) Waves 4) Mechanics and materials 5) Electricity 6) Further mechanics and thermal physics 7) Fields and their consequences 8) Nuclear physics.

In addition, one of the following optional units 1) Astrophysics 2) Medical physics 3) Engineering physics 4) Turning points in physics 5) Electronics.

## Progression Routes and Careers

This subject can lead on to a great many routes and careers. Most well known being the Sciences, Engineering and Maths, or roles in Business and IT technology. If you are thinking of an apprenticeship, it can help give you the foundation you need.





# Studying at Post-16

What is a typical Post 16 learner's day like?

Students will electronically sign in on arrival using their personalised fob. They typically attend 1 to 2 tutor sessions per week and assembly on a Wednesday. Whilst on site students can access our Post 16 Centre. We have 2 rooms equipped with computers so students can work independently. The Student Hub is an area many use as a quiet area to revise and complete written work and often catch up with Mr Cramphorn about life after Post 16.

Students have independent time to study. Many do this in school, however, students are free to sign out and work from home when lessons are not timetabled. Our provision aims to provide our students with a curriculum which best suits their needs. During the morning sessions our Post 16 '16<sup>th</sup> Street Café' is open for a snack or order lunch. Students love the flexibility it provides and regularly enjoy their favourite foods.

The majority of lessons are timetabled in our Post 16 Centre so students are in a more adult like environment. Fobs give them access to our printing facilities, so like staff they can print, copy and scan to keep their folders of work up to date.

Aspire days are focused on helping students make choices for the future, many of which are hosted off site. The experience of our tutors again supports our students in aiming high with success!

Campsmount Post 16 supports all learners and their needs. We are happy to consider students who are not ready for Level 3 courses. We work with Doncaster based providers to secure some students an education or training course that registers them as still in full time education. If you think this suits your needs please speak to Miss Hudson.



# Vocational Courses

## Applied Science

### Subject Overview

Designed for those who are interested in learning about Applied Science, with a view to progressing to a wide range of higher education courses, not necessarily in applied science. The course contains a wide selection of Science (Biology, Chemistry and Physics) with an option unit chosen in year 2. The course has a significant practical element, providing real experience with Science in the workplace. It will develop essential skills in analysis, research with both qualitative and quantitative emphasis.

### How is the course assessed

The course is assessed by both internally and externally assessed elements. The course is equivalent to one A Level and consists of 4 units of study - 2 of these are assessed internally and 2 are assessed externally.

### Progression Routes and Careers

Developing your skills in Applied Science will allow you to progress onto many Science based careers, including Forensics, Biologist, Chemist, Pharmacologist and many more.



## Business Studies

## Vocational Course

### Subject Overview

Business Studies is one of the most popular and successful courses in the Post 16. The course combines theory and practice through coursework and exams. The course allows you to study theories and apply them to real life companies, covering the following themes; Marketing, Business Ethics, Human Resource Management and Finance & Economics. The course will also suit you if you aren't too keen on end of year examinations and can maintain a high level of work throughout the two years. You need to be organised, be able to work to deadlines and be independent in your studies.

### How is the course assessed

- 4 Unit course (1 A Level) 2 units are coursework and 2 units are exams.
- 6 Unit course (1.5 A Levels) 4 units are coursework and 2 units are exams.

You will also be asked to present reports and conduct presentations throughout the course.

### Progression Routes and Careers

Business is all around you and so the content and skills you develop are transferable to whatever you do in life. It is a subject in demand by both universities and employers alike.





# Performing Arts

## Vocational Course

### Subject Overview

RSL Performing Arts can be studied through the Diploma (equivalent to 1.5 A Levels) or the Extended Diploma (equivalent to 3 A Levels) and across 3 disciplines, Dance, Drama and Musical Theatre, with a detailed focus in either Dance or Musical Theatre. This course covers the key knowledge and practical skills required in preparation for working in the performing arts industry or going on to a performing arts related degree course at University. This qualification lets you study a stimulating curriculum consisting of practical and theoretical work.

### How is the course assessed

Assignments involve students completing tasks set in work-related scenarios. There is one (2 for the extended qualification) externally marked assessment which consists of tasks that are completed in controlled conditions and are based on pre-release information concerning a performing arts related performance. The rest of the course consists of a range of different units with one compulsory unit to be completed on 'Careers in the Performing Arts Industry' and then 5 practically based units for the diploma and 10 for the extended.



### Progression Routes and Careers

You could go on to find employment within the performing arts industry or progress to a range of undergraduate performing arts courses at University, including Drama, Dance, Musical Theatre and Stage Management. Universities will accept the RSL Level 3 qualifications alongside other vocational qualifications or A Levels. The course can also contribute UCAS points towards non-performing arts-related university courses.

## Vocational Courses

# Health and Social Care

### Subject Overview

The Level 3 Health and Social Care course is an excellent course for those who are pursuing a career in this sector, such as in the NHS, teaching or social work for example. A work placement will also be completed throughout this course as it is extremely valuable to develop practical and employability skills, as well as deepening their knowledge of the Health and Social Care sector.

### How is the course assessed

The triple award course is assessed using 9 internally marked assignments, 3 externally set exams along with a controlled assessment.

The single and double awards are also assessed similarly, with assignments and examination numbers altered according to the award.



### Progression Routes and Careers

The triple Level 3 course is equivalent to 3 A Levels and so is a fantastic stepping stone to University. Recent years have seen excellent outcomes for students. Career progressions from this course include teaching, nursing, social work, paramedics, care assistants/managers, early years workers and many more!

## Subject Overview

This two-year qualification is equivalent to 1 A Level and covers the key knowledge and practical skills required in preparation for working in the ICT industry or going on to an ICT related degree course at University. You will study 5 units over the two years, topics include computer hardware, computer software and networking.

## How is the course assessed

Two units are external examinations and three are portfolios. Each Portfolio is assessed internally and will show your understanding of a specific standard. Some of the coursework elements include practical tasks such as building a computer and installing and configuring software. At the end of the course you will be awarded a pass, merit, distinction or distinction\*.

## Progression Routes and Careers

This qualification is designed to enable learners to enter employment or to progress to Further Education/Higher Education. Example areas might include digital design, networking and computer maintenance & support.



## Creative Digital Media Production

## Vocational Course

## Subject Overview

On this course, students study a range of different media texts assessing how groups of people are represented, how films are produced and how magazines are put together. This enables students to look more critically at the media itself and the power it holds over its audience. Students sit two exams and complete a number of coursework elements one of which being a 'Pre Production Portfolio'. Students also explore film and digital magazine productions alongside analysing media campaigns.

## How is the course assessed

The course is made up of internally assessed and externally assessed units. Unit 1- Media Representations (Externally assessed), Unit 4 Pre-Production Portfolio (Internally assessed), Unit 6 Media Campaigns (Internally assessed), Unit 8 Responding to a Commission (Externally assessed), Unit 10 Film Production (Internally assessed) and Unit 14 Digital Media Production (Internally assessed).

## Progression Routes and Careers

This course is great for students who are interested in working in the media. Students could opt to do journalism, gaming design, teaching or apply for Graduate Schemes with large retailers. The skills that are developed place students in a good position to pursue careers in marketing and integrated digital media communications.



### Subject Overview

BTEC Sport can be studied as a full-time Extended Diploma (Equivalent to 3 A Levels) or as part of a curriculum that includes other Vocational or A Level courses. This course covers the key knowledge and practical skills required in preparation for working in the sports industry or going on to a sports-related degree course at University. This qualification lets you study a stimulating curriculum consisting of practical and theoretical work.

### How is the course assessed

Assignments involve students completing tasks set in a work-related scenario. Tasks are completed in controlled conditions and are based on pre-release information concerning a business or sports development focus. In the written exam, students will relate their knowledge of anatomy and physiology to performance and training.



### Progression Routes and Careers

You could go on to find employment within the sports industry or progress to undergraduate sports courses at University. Universities will accept the BTEC Level 3 qualifications alongside other BTECs or A Levels. The course can also contribute UCAS points towards non-sport-related university courses.







## **CEIAG Support At Campsmount**

Campsmount Academy works in partnership with a number of local businesses and agencies to offer students the very best in CEIAG. Throughout their time at Campsmount, students have the opportunity to engage in a wide variety of activities that are designed and delivered in partnership with these professionals.

### **Message From Head of Careers**



At Campsmount we strive to offer all of our students the very best support and encouragement that they need in order to achieve their maximum potential. Our Careers Education, Information, Advice and Guidance (CEIAG) department offers students in all years, the opportunity to explore the careers that are available to them and the various routes into Higher Education. Throughout their time at Campsmount, students will experience a plethora of career events that are delivered by professionals and local businesses. I hope that you take the time to read through this information pack with your child and encourage them to explore the career and Higher Education opportunities that are available to them.

Mr J Self, Head of Careers

# Our Students Career Journey

**At KS3, students complete group activities that are designed to raise their awareness of the careers that are available to them. They are encouraged to think about the routes that they need to take in order to achieve their aspirations and career goals.**



**At KS4, students receive bespoke 1-1 careers support and guidance, to ensure that they select the route that is best suited for them. This is supported by both the HeppSY+ programme and Doncaster Chambers.**

**Students in Year 10 are given the opportunity to partake in work experience visits in order to gain an understanding of what working life is like.**



**At KS5, students are supported to complete their UCAS applications and have opportunities to explore the options that are available to them. Campsmount works in partnership with the HeppSY+ programme in order to ensure that every student at Campsmount is supported and takes the career path that is correct for them.**

**Y7**

**Y8**

**Y9**

**Y10**

**Y11**

**Y12**

**Y13**



## Our vision:

*'To develop both a Character and a Personal Development curriculum that supports every student in engaging with the many diverse aspects of life and society'.*

*The ASPIRE Programme is fundamental to the Character and Personal Development of students at Campsount and to becoming a 'truly great school with truly great students'.*

**Ambition**

**Support**

**Persistence**

**Inspire**

**Resilience**

**Effort**

**Outstanding achievements will be measured by:**

All students having the opportunity to experience at least one aspect of the extended curriculum offer.

All students being assigned a 'Character and Personal Development passport' with opportunities to reflect and evidence their progress towards achieving their Personal Development milestones.

All aspects of the wider ASPIRE programme being regularly evaluated to ensure they are fit for purpose.



**Students will experience**

**outstanding extended extra and super curricular opportunities.**

**All key stages:**

- The Russell Group
- CEIAG
- Enterprise Education
- World Book Day
- Remembrance Day
- National Poetry Week
- Young Writers
- ASPIRE Days
- Take Over Challenge
- Dance group
- Cheerleading
- Guitar Club
- Singing Club
- Annual School Production
- Instrument Lessons
- Fishing Club
- Remembrance Day

**Key stage 3:**

DEAR day (Drop everything and read)



GIN day (Get into number)  
English theatre visit  
Sports day

**Key stage 4:**

- Business Visits
- CAP Evening
- NCS
- Concert/Theatre Visits
- Connection to Active Fusion
- Dance Leaders

**Key stage 5:**

- Concert/Theatre Visits
- Connection to Active Fusion
- Dance Leaders



*Partners we're working with on our journey to becoming 'a truly great school'*





# **ASPIRE Day Program**

Our ASPIRE Days offer a dynamic approach to developing personal, social and emotional well-being as well as enabling our students to become responsible and caring citizens. Central to this approach is the collapsing of the normal timetable where year teams facilitate learning experiences and days that go beyond the traditional boundaries of 50 minute periods. Teachers are encouraged to be creative and innovative in their delivery and external agencies help to create memorable learning experiences. These include a huge range of visitors that present interesting and thought provoking sessions.

These days are based around five themes: Pride, Community, Responsibility, Ambition and Identity and Relationships

In addition, Campsmount works with external partners and educational institutions. For example, establishments such as University of Sheffield, Leeds University of Art, Sheffield Hallam University, Doncaster College, the High Speed Rail College, industrial and local government partners, including Doncaster Chambers. Through these partnerships our students get to take part in a wide range of activities such as the Brilliant Club, Discover Us Programme, HeppSY+ events and many more.



## **Our Students Steering Our Strategy**

We are very proud to say that our students themselves have a direct say in the CEIAG provision that they receive. As alongside the Student Voice that is already such a important part of Campsmount, students fill in the 'Temperature Test' Questionnaire. This allows them to say what careers or subjects they are interested in and to raise any relevant questions. Alongside this, students highlight the work experience they would like to participate in and the next steps that are required. This information is used to identify opportunities and tailor them to the students response .



# CEIAG at Post 16

At Campsmount our Post 16 students are provided with a bespoke and tailored program, helping them to achieve their goals and support them in finding the best route into Higher Education or Post 18 training. We support this with trips and activities, such as the University of Sheffield Student Life Discovery Trip, heppSY+ Bus, Application Day and Doncaster College Trip, which explore student life, apprenticeships and much more.



## Work Experience in Post 16

All Year 12 students will take part in a two week work experience programme in July of Year 12. This is supported by Mrs Wilson who prepares you by:

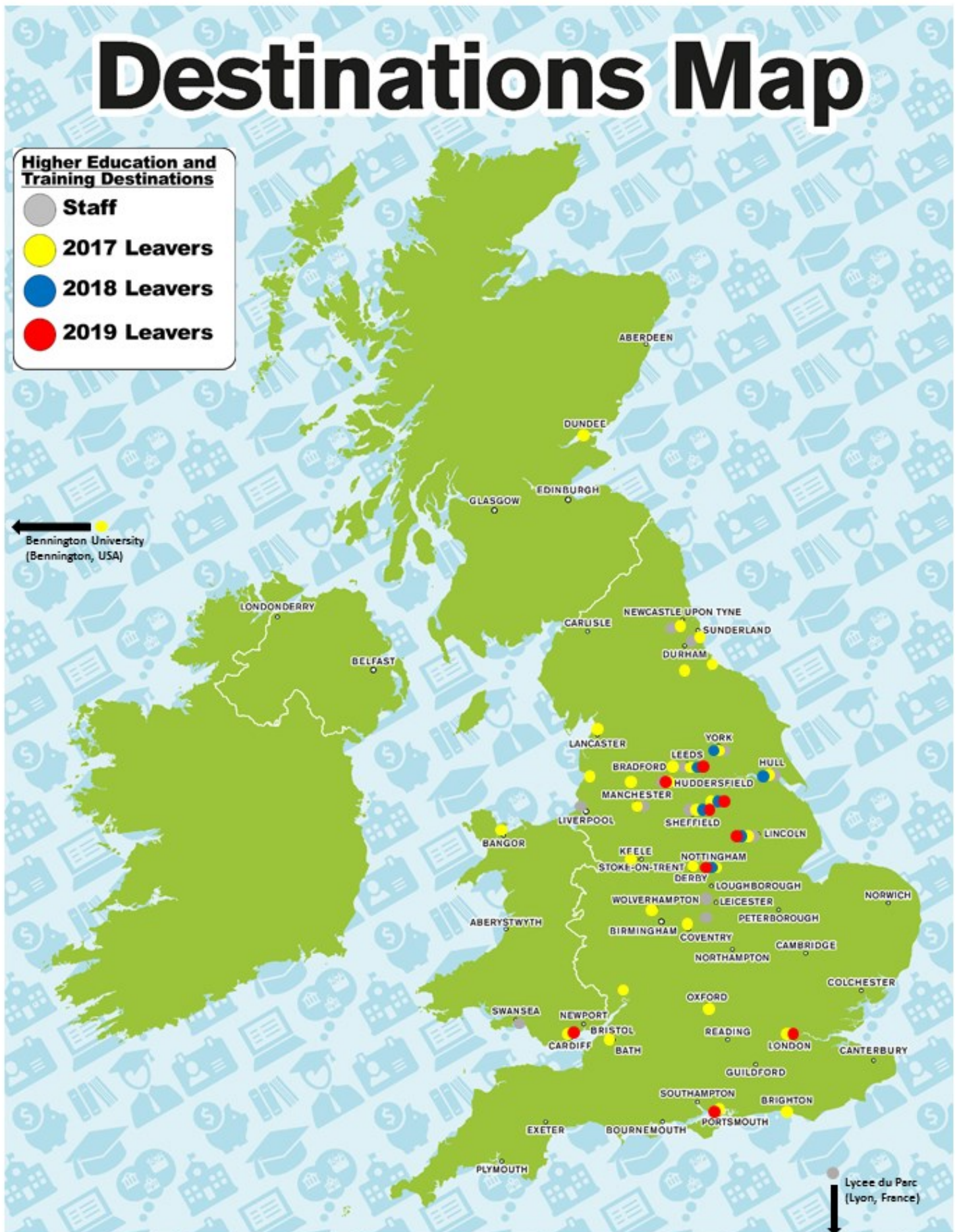
- Discussing your individual needs linked to your career choices.
- Liaising with employers that we have developed links with.
- Preparation on an Aspire Day to highlight your targets for your placement.
- A review in Year 13 to identify the skills you have developed/enhanced.

Students find this invaluable when completing UCAS personal statements and CVs for employment. This is in addition to any work skills you develop as part of your curriculum.



# Learning From Experience

Past staff and students are part of our alumni network, providing current students with the opportunity to draw on their past experiences to learn more.





# What do we mean when we say Higher or Further Education in school?

Education in the UK is defined by a series of levels that are then grouped together into a series of brackets. Further Education and Higher Education are two of these brackets that we commonly hear about in the press or at school.

## Further Education

Any education at under 18 is compulsory study at Level 2 to Level 3, and after 18 it includes any voluntary education or training at Level 3. Normally undertaken at a college or Sixth Form.

## Higher Education

Includes any voluntary study at Level 4 or above. This is not just going to University and spending 3 or 4 years getting a degree. Many colleges and other institutes offer Higher Education options, which can include HNCs, NVQs, Diplomas, Apprenticeships or Technical Certificates

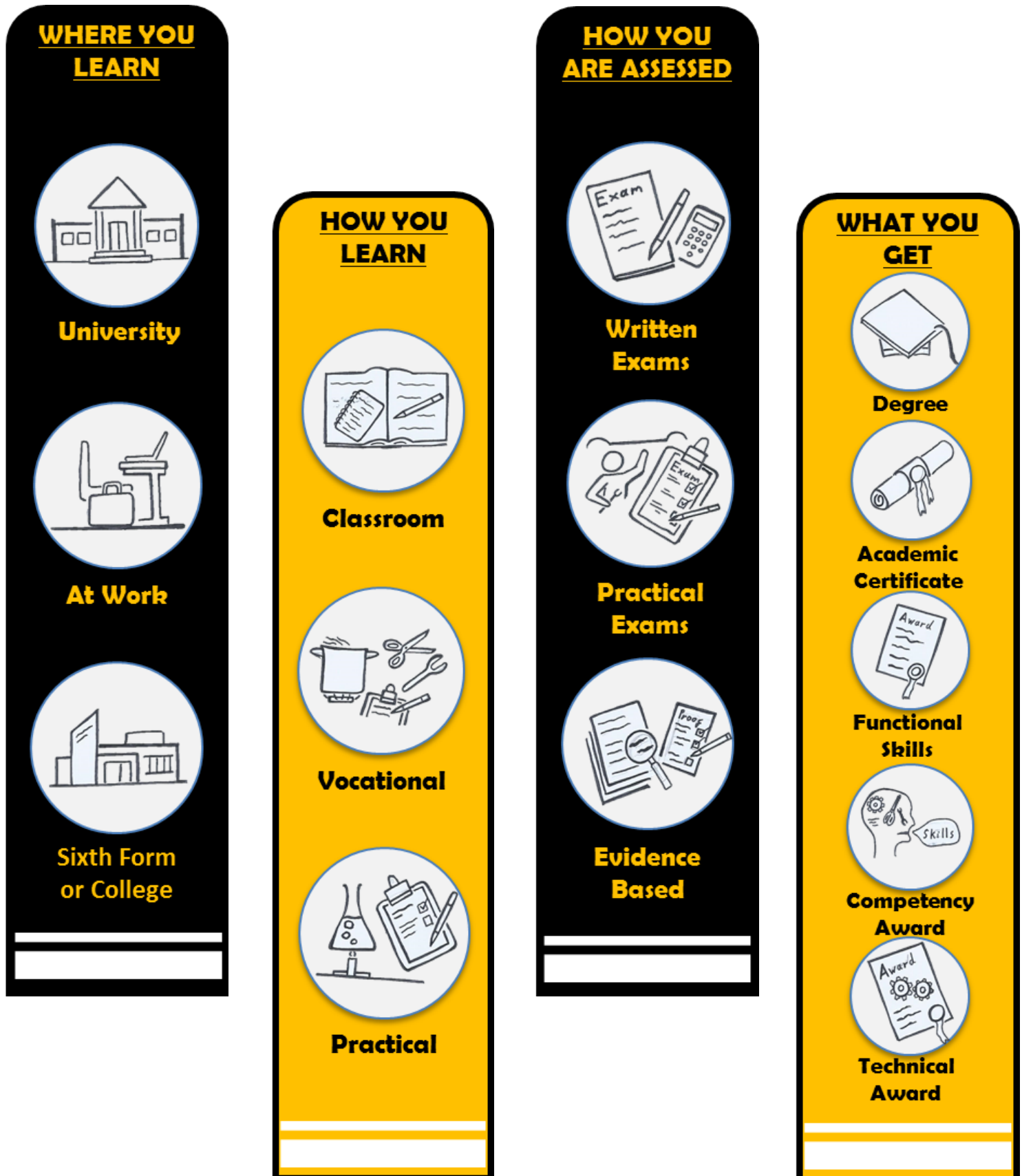
<b>Higher Education</b>	<b>Level 8</b>	Doctorate
	<b>Level 7</b>	Masters Degree, Degree Apprenticeship, NVQ, Postgraduate Certificate
	<b>Level 6</b>	Bachelors Degree, Degree Apprenticeship, NVQ, Graduate Certificate
	<b>Level 5</b>	HND, Diploma of HE, Foundation Degree, NVQ, Higher Apprenticeship
	<b>Level 4</b>	HNC, Certificate of HE, NVQ, Higher Apprenticeships, Foundation Certificate
<b>Further Education</b>	<b>Level 3</b>	A-Levels, Advanced Apprenticeships, BTEC Level 3, Vocational Diploma, NVQ
	<b>Level 2</b>	GCSEs, Intermediate Apprenticeships, BTEC , NVQ
<b>Foundation Education</b>	<b>Level 1</b>	Vocational Diploma, BTEC , Traineeship, NVQ
	<b>Entry Level</b>	Life Skills

# **10 Reasons Why Higher Education is a Good Idea!**

- 1) You are more likely to get a job with better pay and promotion prospects.**
- 2) There is a much wider choice of jobs and careers for people who have studied a Higher Education course.*
- 3) There are different ways of studying and learning - choose your course carefully and do plenty of research on the course you are planning to study.**
- 4) You will learn more about yourself and what you can achieve. Your confidence and self-awareness will increase.*
- 5) You will make a wide circle of friends, most likely from different areas of the country, and different backgrounds and cultures.**
- 6) The jobs market is changing and the majority of new jobs during the next decade will require a higher level qualification - such as a degree, NVQ Level 4+ and Higher Apprenticeships.*
- 7) You will have the opportunity to develop new interests, gain the benefit from new experiences and try out new hobbies and pastimes.**
- 8) You will get support from tutors, mentors, student groups and new friends to help you make the most of your time.*
- 9) You will have the opportunity to take part in broad range of social activities and clubs.**
- 10) All in all, your Higher Education experience will help you with progression and promotion in your chosen career.*

# Further and Higher Educations Routes

There are a wide range of different educational routes, each tailored to achieve a specific goal or taught in a dedicated way. The following pages give a brief overview of some of the most common routes that are available. To help you compare them, use the key below which gives a overview of the 4 key parts, where you learn, how you learn, how you are assessed and what you get.





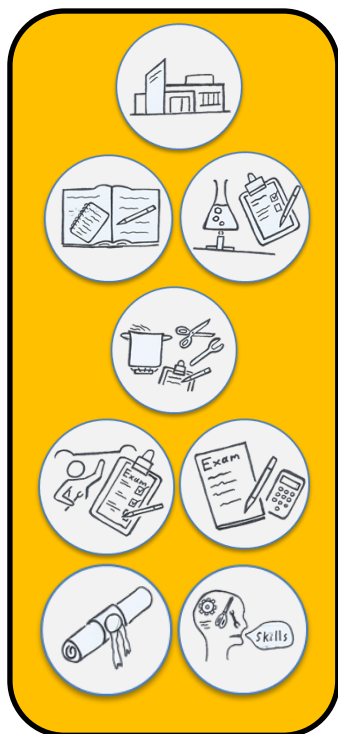
# A-Levels

A-Levels are a subject-based academic qualification studied at Post 16. An A-Level focuses on a particular subject and can involve a wide range of work including written assessments, practical experiments and projects. Supported by self study and also group work. Normally 3 or 4 A-Levels are chosen for Post-16 study.



Qualification	Level/Duration	Equates To
A-Level	Level 3 (2+yrs)	BTEC

# BTEC Nationals



BTEC stands for Business and Technology Education Council, these are subject specific work-related qualifications, studied at Post 16. BTECs cover a wide range of subject areas, and offer a range of different outcomes. These outcomes count as single, double or triple qualifications. BTECs are assessed with exams, coursework, projects and practical



Qualification	Level/Duration	Equates To
BTEC	Level 3 (2+yrs)	A-Level

# Finding Out More About Further Education

The previous pages have highlighted several options available at Post 16 or Further Education. Research is important to help with your choices.

A Prospectus is also useful in identifying what options are available. Again, research is key to ensuring you select the correct path into Further Education.

**Useful Links**

**Campsmount Academy Website:**  
[www.campsmount.com](http://www.campsmount.com)

**UCAS Search 16-18 Study:**  
[www.ucasprogress.com/search](http://www.ucasprogress.com/search)

# University Degrees

An academic or university degree is a recognised qualification of Higher Educational study. It is normally undertaken at or in association with a University or University centre.

Studied either full or part-time, in an organised program made up of modules focused around specific subjects over a specified number of years. Each module contains a range of research, project and coursework. These are assessed through examination or project outcomes. Most degrees end with an individually lead project that makes up the majority of the final year.



There are a range of different degrees available, Foundation, Bachelor's and Masters. For those students who do not quite make the grade, a Foundation Year is available. This will increase your base knowledge, ready to start your degree the following year.



<b>Qualification</b>	<b>Level/Duration</b>	<b>Equates To</b>
<b>Foundation Degree</b>	<b>Level 5 (2+yrs)</b>	<b>HND, NVQ Lv 5</b>
<b>Bachelors Degree</b>	<b>Level 6 (3+yrs)</b>	<b>NVQ Lv 6, Graduate Diploma</b>
<b>Combined/Dual Degree</b>	<b>Level 6 (3+yrs)</b>	<b>Graduate Diploma, NVQ Lv 6</b>
<b>Combined Masters Degree</b>	<b>Level 7 (4+yrs)</b>	<b>equates to NVQ Lv 7</b>

## HNC and HND

The HNC (High National Certificate) and the HND (Higher National Diploma) courses are vocational qualifications designed to teach practical skills for specific areas, for a given occupation or subject. They are normally taken after A-Levels in association with a Higher Education body or centre, studied full or part-time depending on the provider.



<b>Qualification</b>	<b>Level/Duration</b>	<b>Equates To</b>
<b>HNC</b>	<b>Level 4 (1+yrs)</b>	<b>Higher Apprenticeship</b>
<b>HND</b>	<b>Level 5 (2+yrs)</b>	<b>Foundation Degree</b>

# Cert/Dip of HE



The CertHE (Certificate of Higher Education) and the DipHE (Diploma of Higher Education) are qualifications available for a wide range of subjects. Each is made up of a range of related modules selected by you to achieve the desired outcome. Normally delivered by a University or Higher Education centre, studied full or part-time depending on the provider.



Qualification	Level/Duration	Equates To
Cert HE	Level 4 (1+yrs)	Higher Apprenticeship
Dip HE	Level 5 (2+yrs)	Foundation Degree

## Apprenticeships

An apprenticeship is a nationally designed programme for 16-24 year olds who have left full time education, or are already in employment.

As an apprentice you will follow work based training programmes defined by employers and gain nationally recognised qualifications. These are available at a range of different levels from Intermediate Apprenticeships at Level 2 to Degree Apprenticeships at Level 6. With a starting salary of £3.50 per hour, increases are dependent on the employer.



Apprenticeship training is work based learning, but you will be required to attend College or University for classroom or practical learning, depending on the company you are employed by and the level at which you are studying. Some apprenticeships, especially degree apprenticeships, still carry a graded entry requirement.

Traineeships also come under this title but have a different focus. They are designed to support young people in developing the skills needed for employment and making up any gaps they have in their grades or qualifications.

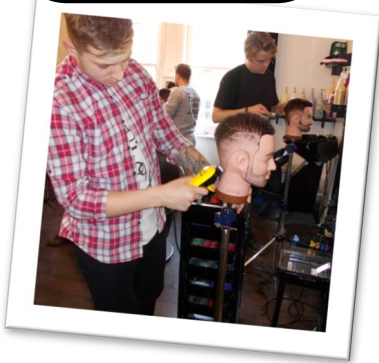


Qualification	Level/Duration	Equates To
Advanced Apprenticeship	Level 3 (1-2yrs)	A Levels, BTECs
Higher Apprenticeship	Level 4-5 (1-4yrs)	HNC, NVQ Lv 4-5
Degree Apprenticeship	Level 6 (3-4yrs)	Degree with Honours



# NVQ (National Vocational Qualification)

NVQ (National Vocational Qualification) is a qualification taken over a flexible period of time and are available for approximately 90% of occupations in the UK. The aim is to allow those currently employed or wanting to improve their skills in a specific area, to undertake a vocational program of learning. Whilst working in a job related to the field or particular area, an NVQ qualification can be gained.



Qualification	Level/Duration	Equates To
NVQ Level 3	Level 3 (~1yr)	A Level
NVQ Level 4	Level 4 (1-2yrs)	HNC
NVQ Level 5	Level 5 (2-3yrs)	HND, Foundation Degree
NVQ Level 6	Level 6 (2-4yrs)	Bachelors Degree
NVQ Level 7	Level 7 (3-5yrs)	Masters Degree

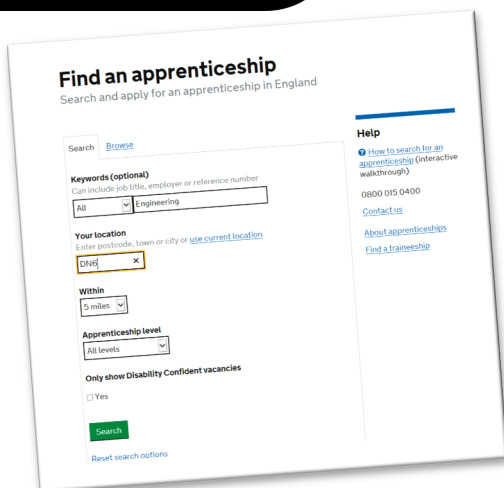
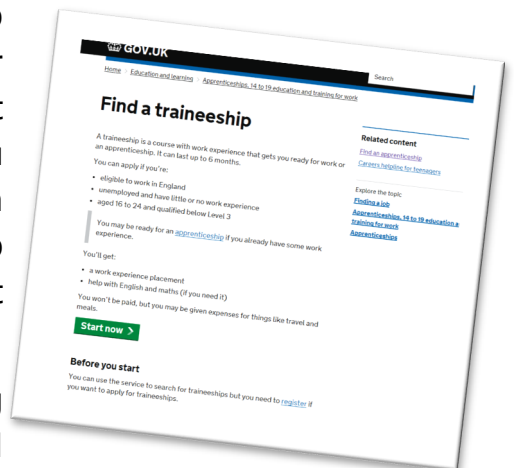
## Useful Links

**Apprenticeship.GOV**  
[www.gov.uk/apply-apprenticeship](http://www.gov.uk/apply-apprenticeship)

**Traineeship.GOV**  
[www.gov.uk/find-traineeship](http://www.gov.uk/find-traineeship)

# Researching Apprenticeships

Applying and finding an apprenticeship is different from other forms of Further and Higher Education. You do not apply through a specialist portal, you apply directly to the company, as with any other job application. Traineeship follows a similar but slightly different process.



The main tool for searching for apprenticeships and traineeships is on the Apprenticeship.GOV page. Here you identify the area of interest, your location, search radius and type of apprenticeship you are looking for.

To apply you will need a CV and a covering letter. You may be required to take part in some assessment tests.

# Researching Higher Education

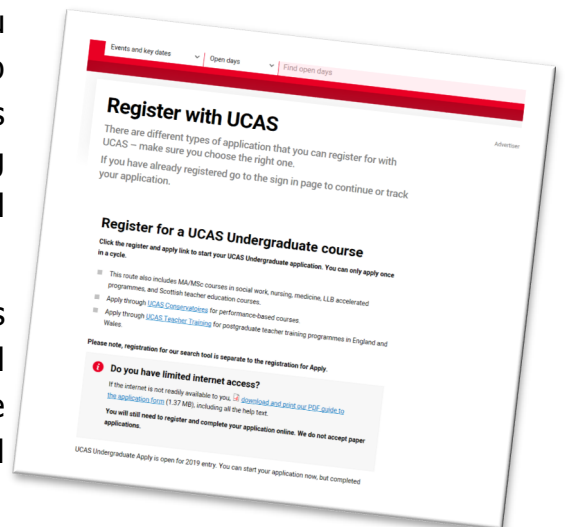
When searching for Higher Education routes or options, there are a multiple of ways this can be done. Initially, we recommended that you use the UCAS search tool, as all Universities and University Centres will advertise their courses with UCAS.

Once you have found a course or degree you like, it is important to then look at the institutes that offer the course. Attending open days and going on campus tours will be a really big help in choosing the right place for you.

The most common way to apply for Higher Education is through UCAS, you

can do this through the online portal. You will need to select up to five options, providing your expected grades. Alongside this you will need to write a personal statement including information relating to any work experience, volunteering and charity work

UCAS opens in May and the deadline for applications is January the following year. It should be noted that for Medical and Veterinary applications the deadline is in October of the same year. Support will be provided by our Post 16 and careers team.



City & Guilds

[www.cityandguilds.com](http://www.cityandguilds.com)

NVQ Courses

[nvqcourse.co.uk](http://nvqcourse.co.uk)

UCAS Search

[www.ucas.com/search](http://www.ucas.com/search)

Whatuni

[www.whatuni.com](http://www.whatuni.com)

The Complete University Guide

[www.thecompleteuniversityguide.co.uk](http://www.thecompleteuniversityguide.co.uk)

The Guardian University Guide

[www.theguardian.com/education/universityguide](http://www.theguardian.com/education/universityguide)



## Other Options

The options detailed in this booklet do not represent all of the educational routes that are available. There are alternative options and routes for specific jobs or skills, including City and Guilds Courses, Vocational Diplomas or Music/Dance Accreditations. Research is key to discover all the options and the advantages and disadvantages each one has.

# Useful Information on Student Finance

There are several common misconceptions about student finance, these can cause confusion and stress during the application process. The points below provide some information to help makes things clearer.

- Having a student loan will not prevent you from being able to get a credit card, bank loan or phone contract. Rather than a loan, consider it as a compulsory contribution upon completing your studies!
- You only pay back on any earnings over £25,000 at 9%. So if earnings are £27,000, the repayment amount would be 9% of £2,000, which will be £180. This will be automatically deducted from your monthly income once you earn above the threshold.
- If income drops below £25,000 all payments will stop immediately and will not restart until you are back, earning over £25,000.
- It is unlikely that you will ever pay back the entirety of your student loans and , after 30 years, the remainder of the loan will be wiped.

<b>Income</b>	<b>Interest Rate</b>
£25,000 or less	Inflation rate
£25,000 to £45,000	Inflation plus up to 3%
Over £45,000	Inflation plus 3%



## **Repaying Student Loans**

- You will not start to pay back your loan until the course has been completed and you earn over £25,000!
- After 30 years the debt is written off completely.

## **Applying for Student Finance**

To apply for student finance, use the Student Finance online portal (gov.uk/studentfinance). The student will create a profile and follow the necessary steps, to complete the application. A parent profile to support the application is also required.

Funding is available for the first Higher Education course undertaken with some funding available for post graduate or follow on education courses. Funding is not available for those undertaking an apprenticeship or a traineeship.

### **Who is Responsible For What Information?**

#### ***Prospective Student :***

- Proof of identity and residency.
- Higher Education course details.
- Bank account information.
- National Insurance number.

#### ***Parents/Guardians***

- National Insurance numbers.
- Income and earnings for the household where the student resides.
- Number of dependants within the household.

Why does the parent need to support the Student Finance application?

The maintenance loan is means tested, which is dependant on the household income and the parents tax returns. This is why they request a National Insurance number, as this allows access to the necessary tax information. The household income and number of dependents provides the information for means testing, to define the value of the maintenance loan.

Key website addresses you will need!

gov.uk/studentfinance - [www.gov.uk/student-finance](http://www.gov.uk/student-finance)

Student Loan Company - [www.slc.co.uk/](http://www.slc.co.uk/)

## **Value of Loans**

### ***Tuition Fee Loan***

- Up to £9,250 for full time study.
- Up to £6,165 for part time study.

### ***Maintenance Loan***

- Up to £7,097 if living at home during study
- Up to £8,430 if living away from home and outside London
- Up to £11,002 if living away from home in London

( All of these figures are means tested!)



# Notes

# Discover For Yourself

For Further details regarding careers at Campsmount can be found on the Careers and Higher Education section of our website. This includes current labour market information and is regularly updated with upcoming events. Also, follow the school twitter @CampsmountAcad and check the website news area for careers and education related stories.

[www.campsmount.com](http://www.campsmount.com)

---

## Our Partners



[extra.shu.ac.uk/heppsy](http://extra.shu.ac.uk/heppsy)



[www.officeforstudents.org.uk](http://www.officeforstudents.org.uk)



[www.careersandenterprise.co.uk](http://www.careersandenterprise.co.uk)



[www.doncaster-chamber.co.uk](http://www.doncaster-chamber.co.uk)



[www.aheadpartnership.org.uk](http://www.aheadpartnership.org.uk)



[www.nationalenterprisechallenge.co.uk](http://www.nationalenterprisechallenge.co.uk)



[www.etrust.org.uk](http://www.etrust.org.uk)



[www.keepmoat.com](http://www.keepmoat.com)



[www.rejus.co.uk](http://www.rejus.co.uk)

---

Correct at time of publication