



# Sixth Form Prospectus 2017

## CAMPSMOUNT



## Your Sixth Form.... Your Future





# Your Next Steps



I would like to welcome you to Campsmount Academy Sixth Form at this exciting time in your pathway through education. Our Sixth Form will successfully prepare you for the next phase of your future, be it university, employment or further training. The Sixth Form at Campsmount provides a first class learning environment where we aspire to meet the needs of every student that chooses to study here. We are committed to achieving academic excellence through offering a wide range of courses. This year we have significantly increased the courses we offer following consultation with you to ensure that we can meet your needs and ambitions. This has seen more and more students from our community following numerous pathways in a range of qualification types.

Life in the Sixth Form at Campsmount supports your next steps as you leave us ready to make a footprint in the world as a young adult. The activities available enable students to contribute to both our school and wider community through sport, performance, charity work and leadership opportunities. These provide the 'EDGE' for students as employers and universities choose to accept our well balanced individuals.

The Sixth Form at Campsmount Academy builds on our supportive and nurturing ethos, whilst also giving students the independence and flexibility of higher education. We offer excellent state of the art facilities for learning, however; buildings do not make a school, it is the character, quality and talent of our students. I am certain that the Sixth Form at Campsmount can be YOUR FUTURE, and I wish you all the best in your studies and look forward to welcoming you soon.

Mr A Dale,  
Principal

As the new head of sixth form I am keen to build on the excellent reputation that has grown here at Campsmount. The sixth form team are eager to continue offering the independent and supportive learning environment you need to reach your full potential. Our aim is to develop you as a leader of the future so you can progress onto the next pathway in your journey.

Outcomes for our students are massively important and we have made improvements across a much broader curriculum. This prospectus outlines our exciting range of subjects on offer, including some new ones for 2017! Making decisions about the future can be daunting, but with your prospectus information and the support and guidance of the post 16 staff and your tutors we can help you make informed decisions.

Our sixth form facilities continue to be highly regarded by our students providing the perfect atmosphere to learn. You can enjoy your own catered cafeteria, access to the school's Wi-Fi, a large number of computers for private study and quiet areas to study, complete work and revise. These outstanding facilities coupled with the excellent teaching provided by our experienced staff is the perfect combination for your success.

I wish you the very best of luck in your GCSE studies and look forward to welcoming you into our sixth form.

Miss D Hudson  
Assistant Principal Post 16





# Your Sixth Form – A Student's View

You've probably heard 'the jump from GCSE to A Level is massive' a million times by now, but don't let that phrase lose meaning – the transition from Year 11 to Year 12 will be one of the most challenging tasks of adolescent life. I'm convinced that the only reason I made that jump without falling was because of the welcoming feel and supportive guidance offered at Campsmount.

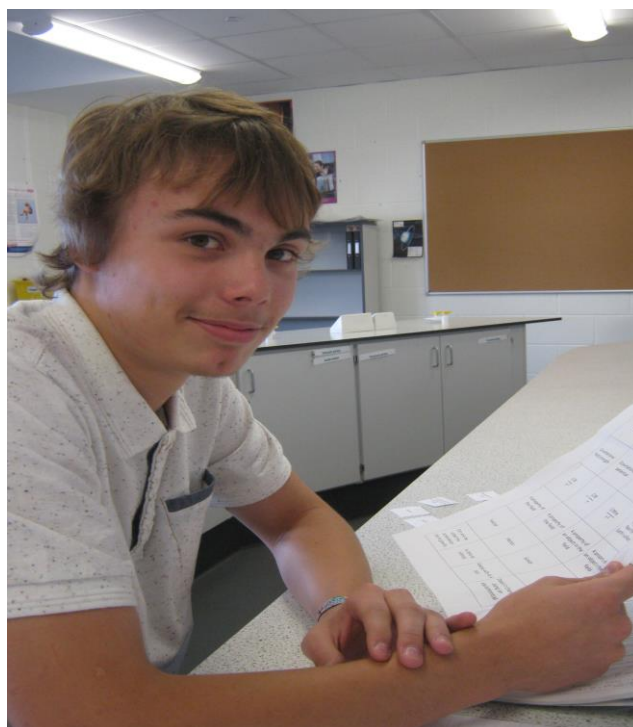
Campsmount differs from many other Sixth Form schools in that it treats Year 12 and 13 students as adults. With a comfy common room and free periods, you definitely feel more mature than lower school students, which is reinforced by the way that staff interact with you. And you finally get to drink a good old cuppa' in school hours! What's more adult than that?

The cosy class sizes make tuition almost private. One teacher to a couple of students in a class ensures that every corner of your course is covered in detail, giving you confidence that you have the best chance possible to achieve your aspirations.

The superb Sixth Form team encourage you to think about what you're going to do next right from as early on as your first term in Year 12. University visits, UCAS conventions and AC days on life skills make you consider not only if university is the place for you, but other possibilities such as work and apprenticeships. In July, I travelled to Tanzania and volunteered in a hospital for two weeks. This isn't me trying to show off, this is just one of many examples what Campsmount can do to make you stand out.

Oh, and I should probably make a comment about the Sixth Form 'Campsmount Coffee Shop' being open for the majority of the day, you can be sure you'll be able to tackle your work load with a cuppa and a cake!' Maybe that would have been a good point to open with...

*Testimonial – Kieran Cave (Year 13, achieved 3 A's and 1 A\* at A Level - August 2015)  
(Now studying Medicine at Brighton University)*







## Your Sixth Form – A Student's View

Anybody who claims that A Levels are easy, are lying to themselves, or they don't attend any lessons! The work load is beyond what you receive at GCSE and you WILL stress out multiple times. However, they are extremely rewarding. A Levels can open the door to universities, jobs and they look even better on CV's.

Apart from the qualifications which you gain, Campsmount offers continued support throughout the two years you spend at Sixth Form. The 'big jump' from GCSE to A levels you often hear about is a huge transition, which is eased by the supportive guidance offered by the Sixth Form team.

Campsmount is particularly unique in comparison to other Sixth Forms, due to the small classes, which creates a one-to-one feel about learning. This was a huge attraction for me, as I lacked confidence in lower school. It has given me the chance to gain confidence in my lessons and ask more questions about the subjects I'm interested in.

The facilities available differs from what you can access in lower school. You are given more privacy during your free periods, use of the mac suite to complete any outstanding work, and the common room at break and lunch time with food and drinks from our own personal canteen.

Sixth Form isn't just about the current A Levels which you are studying. The Sixth Form team encourages you to think about what you're planning to do after you have left. Many trips are organised to universities and UCAS conventions to see first-hand what is on offer after Sixth Form. We also participate in AC Days where we gain new life skills and multiple projects of charity work, for example Christmas hampers and the Shoe Box Appeal. These are just a small handful of opportunities, which Campsmount offer to make you stand out against other students.

From having first-hand experience of Campsmount Sixth Form, I am confident it was the right decision. The welcoming feel and superb staff is something so important, these relationships would be hard to build elsewhere! ☺

Laura Carnall (Previous Sixth Form student, now studying Psychology at Sheffield Hallam University).





# Your Sixth Form – A Student's View

I chose to go to Campsmount Sixth Form for a variety of reasons. Campsmount Sixth Form offers a selection of options that will be familiar to anyone who went to Campsmount during GCSE. The selection isn't the widest but you will be able to find subjects to suit your interests and abilities.

One of the primary benefits of Campsmount Sixth Form over other options, are the small class sizes. This means that whenever you are stuck, or whenever you need help you can access it easily. You will never fall behind in class, as you can always receive the help you need. In other colleges, such as Pontefract, they have classes of 30+ people, in classes of this size you will be unable to receive one to one support.

Another reason why I would recommend Campsmount as your option for Post-16 Education is the fact that it is local. This means you won't have to spend a large amount of time going to and from school. This frees up time for revision, homework and out of school activities.

A unique benefit to coming to Campsmount Sixth Form is that you can spend up to two periods a week, for free, in the school gym. This allows you to keep on top of your personal fitness while at school, and can give you a much needed reprieve from work.

The final benefit of coming to the Campsmount Sixth Form, in my eyes, is that you have existing relationships with teachers and students. This makes the transition into A/AS levels much smoother and reduces stress at the beginning of the year as you don't have to worry about making new friends.

In conclusion, I would recommend continuing your education at Campsmount Academy, rather than moving to another school.

Jack Auty, Year 13





# Your Learning Community

A new school brings with it new facilities and we are very fortunate to have everything that suits your needs as a young adult; from a new astro-pitch to state of the art laser cutters in Design Technology.

As a Sixth Form student you are in a unique position. You are provided with everything you need to enable success. A work-room, fitted with computers and work stations, is situated off your social area where there is a quiet area to enable you to discuss work with fellow students. You will also have access to the school's wi-fi, giving you the option of bringing your own lap-top to work on in school. There is also a projector where sixth form students frequently practice presentations or teach each other to reinforce learning. The 'Mac Suite' is available for use during the school day and the 'Pod' is a Sixth Form resource that is purely for use by Sixth Form students who wish to work in silence.

The social area has its own kitchenette, where you can make yourself an afternoon coffee while you read a book from the book shelf and relax after a hard day's work. This area is staffed and food and drink are available to re-fuel. Alternatively, you can take a quick break in the gym, before you go home for the day.



## Pastoral Care

As a Sixth Form student you will have a highly skilled and very experienced team behind you. Support can come in a number of ways from dealing with the pressures of study to preparing you for life, after you leave us.

Our door is always open and a caring, understanding and constructive team are on-hand to offer help and support when needed.

Together, we will nurture you so that you leave Campsmount with the qualifications, skills and personality to assist you with your next stage in life.





# Your Curriculum

Your curriculum will be based around each individual student to meet your needs in the future and build on your strengths and interests of today. We will work with you to ensure that you are following the right combination of courses which suits your learning and assessment style. The entry requirements for each suite of courses are different and some have particular criteria based on your GCSE performance. Your curriculum will be decided in partnership with our experienced staff following your application and personal interview. The courses section of this prospectus gives a guide to each course and you can find out more by attending our Sixth Form Open Evening and speak to subject leaders.

The curriculum includes the following:

AS Level

A2 Level

Applied General Qualifications (Vocational) Level 3 \*

GCSE Maths and/or English

\*Some Applied General qualifications will be available in a range of A Level equivalents. E.g.

- One (6 Units)
- One and a half (9 Units)
- Three (18 Units)

NB: AS Levels *do not* contribute towards the A level anymore as exams are sat at the end of the second year. AS exams are sat, as they are now, at the end of the year.

'I am now going to university to fulfil my dream...'

'People really do care about you; everyone wants the best for you..'

'I get the support I need and the personal touch...'

'There is something about the homely feel of the school that makes Campsmount a great place to learn...'

'You become much more independent and are responsible for your own learning..'

'I like how Campsmount encourages you to express your individuality...'

'I chose Campsmount and it was the best decision for me. The atmosphere is great ...'

'They do a really good job of realising what you are capable of and making sure you get there...'





# Your Campsmount Edge

## UCAS

The Universities and Colleges Admissions Service is something that you will become very familiar with whilst here with us. We thoroughly prepare you for university by supporting you with your 'personal statement' and writing quality references so you gain an edge on students from elsewhere.

Alongside this you will visit a number of universities to see what type of university and consider what kind of course would suit you best. Guest speakers are invited to work alongside the Sixth Form team so you have the very best preparation for your university interviews.



## EXTRA CURRICULAR

We like to work hard and play hard in the Sixth Form. Sporting wise, netball teams and football teams continue to perform well. The alternative curriculum programme promotes skills; such as teamwork, leadership, decision making, which you will need when you leave us. We have worked hard to develop links with external agencies to provide you with support and information that will prepare you for life after Sixth Form.

Charity work forms a big part of our philosophy and we raise funds through the 'Shoe Box' and 'Genes for Jeans' appeals. Furthermore, we collect food so we can deliver Christmas hampers to over 150 local elderly people in our community. The Sixth Form prom is the highlight of the year where we celebrate hard work and success.





# Your Courses

## A Level Courses

- Art
  - Biology
  - Chemistry
  - Design Technology
  - English Literature
  - Film
  - French
  - German
  - Geography
  - History
  - Mathematics
  - Philosophy & Ethics
  - Physics
  - Psychology
- 

## Vocational Courses

- Applied Science
- Business Studies
- Dance
- Health & Social Care
- ICT
- Media
- Music
- Photography
- Sport



# Art

## Subject Overview

A level Art is a two year course that continues to further develop and refine the skills, knowledge and understanding acquired at GCSE.

The coursework element is biased towards individual interpretation rather than a group led focus so students must be prepared for independent thought and personal responsibility. Established and traditional skills will continue to be a strong factor but a sense of **investigation** and **experimentation** is a necessity.

## What will I study?

Over the 2 years of study students will cover three sections:

### Coursework – 48% of the final grade

Working towards the four Assessment Objectives in Art, students will investigate artists and respond across a spectrum of materials.

### Personal study – 12% of the final grade

Students are to produce a critical written communication journal, consisting of a minimum of 1000 words regarding their investigations.

### Externally set exam – 40% of the final grade

Working towards the four Assessment Objectives in Art, students will investigate artists and respond across a spectrum of materials finalising with a **15 hour exam**.

The coursework sections will involve investigating the ideas of a wide range of artists and art movements and refining the use of materials and processes.

The examination sections are more constrained because of time restrictions, so tend to be more focussed and build on key skills and approaches.

## How is the course assessed?

The course marking structure is a split between the coursework, personal study and the externally set examination. These elements are divided into four assessment objectives that carry equal weighting. All work for all candidates is marked internally by the staff (JSD/DJO) and externally moderated at the end of the second year.

## This course is for you if:

You must have a strong interest in developing both your artistic techniques your conceptual thinking. This is a **high impact course** that demands constant use of your personal free time from the outset and needs a mature approach to reap the benefits. Your enthusiasm and dedication will be matched like for like by the teachers so the only limit is time itself.

## What can I do next?

The majority of students continue their studies by enrolling onto a Foundation Course at a college.

This opens options for future opportunities and university degrees in a variety of areas, such as:

Fine Art, Craft, Illustration, Fashion, Advertising, Graphic Design, Animation, Industrial Design.





# Biology

## Subject Overview

This two-year qualification is equivalent to 1 A Level and covers the key knowledge and practical skills required in preparation for a science or health based degree course at university.

This qualification lets you study a broad and stimulating curriculum consisting of 6 units over the two years that are relevant to modern day science. You will undertake a mixture of practical and theoretical work which will be assessed through external examinations.

## What will I study?

The course will comprise of 6 compulsory units:

1. Development of practical skills
2. Foundations in biology
3. Exchange and Transport
4. Biodiversity, evolution and disease
5. Communication, homeostasis and energy
6. Genetics, evolution and ecosystems

## How is the course assessed?

Each unit is assessed externally through 3 examinations at the end of Year 13.

The examinations are weighted as follows:

- Paper 1: Biological processes
- Paper 2: Biological diversity
- Paper 3: Unified biology

Practical skills will be assessed internally over the 2 years in a series of required practicals. If you demonstrate consistently good practical skills then a separate practical endorsement will be awarded. This will be a consideration by employers and higher education institutions when viewing your qualifications in the future.

## This course is for you if:

- You have a natural interest and curiosity for how living organisms work and co-exist in the world around us.
- You enjoy practical work that allows you to investigate key questions through traditional biology and biochemistry based practicals.
- You enjoy analysing and interpreting data, using good mathematical skills.
- You are good at problem solving.
- You can work independently to develop sound subject knowledge and understanding.

## What can I do next?

Biology is a well-recognised science A level that will be accepted by a wide range of university degrees. It is often a requirement for medical based degrees, including nursing. Environmental studies, agriculture, zoology and other animal based degrees.







# Chemistry

## Subject Overview

This two year qualification is equivalent to 1 A Level and covers a range of concepts from all three branches of chemistry; organic, inorganic and physical chemistry. So why study Chemistry...

Chemistry is the study of materials; what they are made of, how they interact with each other and their surroundings and the role they play in living things.

As such Chemistry occupies a central position in science, linking disciplines from mathematics to medicine and affects every aspect of our lives. Our clothes, the paper we write on, the food we eat, even the celebratory drink when exams are over, all have been improved by people studying Chemistry.

## What will I study?

### In Year 12:

- Module 1 Development of practical skills in Chemistry - an opportunity to develop a range of experimental techniques.
- Module 2 Foundations in Chemistry - taking atomic structure and chemical bonding to a more advanced level.
- Module 3 Periodic table and energy - a closer look at trends in the elements and energy changes in reactions.
- Module 4 Core Organic Chemistry - the basics of Organic Chemistry and how we make new compounds.

### In Year 13

- Module 5 Physical Chemistry and transition elements - understanding reaction rates and equilibria amongst other aspects of Physical Chemistry.
- Module 6 Organic Chemistry and analysis - extending knowledge to other groups of compounds and how to analyse and identify the molecules.

## How is the course assessed?

The AS level is assessed through two exam papers, both 1 hour 30 minutes in length. The development of practical skills will be assessed through these exams.

The assessment of the full A Level involves three written exam papers at the end of the course, two lasting 2 hours 15 minutes and one lasting 1 hour 30 minutes. The development of practical skills will be assessed through these exams.

Throughout the course there will also be regular internal assessments to ensure students are on track to achieve their target grades.

## This course is for you if:

You have a keen interest in Chemistry and have gained a minimum of a grade B in your Chemistry GCSE. If you have studied Additional Science at GCSE you can still select A Level Chemistry though you will need to do some additional work to prepare for September.

## What can I do next?

The choices with a Chemistry A Level are numerous and varied. For example you can continue your studies in the discipline to degree level studying Chemistry, Medicinal Chemistry, Analytical Chemistry, Biochemistry and Chemistry with Computer Science. Or you can embark upon one of the many professions for which an A Level in Chemistry is essential, such as Medicine, Chemical Engineering, Dentistry, Nursing and Physiotherapy.



## Subject Overview

A-level Design and Technology: Product Design provides students with the opportunity to study an AS level or continue for the full two years to complete an A Level.

The course helps students take a broad view of design and technology, develop their capacity to design and make products and appreciate the complex relations between design, materials, manufacture and marketing.

The course has 50 per cent coursework in order to recognise the importance of practical work within this subject.

## What will I study?

A-level Design and Technology: Product Design (3-D Design) is studied over 2 years and each year divided into 3 sections:

Section 1: Core Technical Principles

Section 2: Core Designing and Making Principles

Section 3: Additional Specialist Knowledge

Alongside this, each year candidates will complete a design and make unit where knowledge of the subject content is applied to the design and making of the candidates' own projects.

## How is the course assessed?

The course is split into 2 units for AS Level and 5 units for A level.

### AS Level

Unit 1: Paper 1 – 2 hour written paper. 50% of AS

Unit 2: Non-Exam Assessment – Coursework approx. 35 hours. 50% of AS

### A Level

Unit 3: Paper 1 – 2 hour written paper. 25% A Level

Unit 4: Paper 2 – 2 hour written paper. 25% A Level

Unit 5: Non-Exam Assessment – Coursework approx. 60 hours, 50% A Level

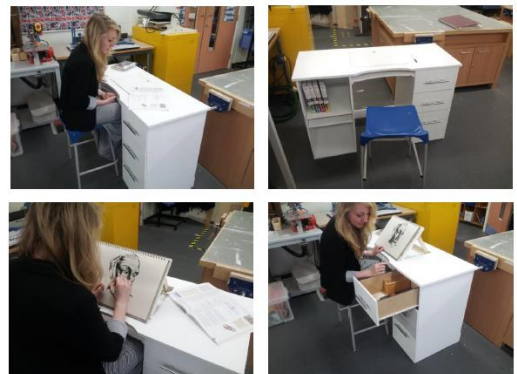
## This course is for you if:

You have enjoyed creating things at GCSE Level in Graphics, Electronics, Resistant Materials or Product Design; if developments in Technology have interested you... this may be the course for you.

As Alina Wheeler once said; "Design is intelligence made visible!" This is what we like to start our course believing. The whole aspect of product design is to create and manufacture, unique, desirable objects, which are needed by the consumer. As well as understanding the materials available to us and their properties.

## What can I do next?

The qualification can lead to a degree in Graphic Design, Product Design, Furniture Making, Industrial Design, 3D Design, Mechanical Engineering, Design Technology for Sport, Design Technology for Aeronautics, Architecture or Teaching. Employment opportunities and prospects within these areas are good.





# English Literature

## Subject Overview

English Literature is an extremely broad and satisfying A Level which will challenge you to consider new ideas and concepts, be prepared to discuss the views and opinions of critics, analyse texts in detail and read extensively around the subject. English is an extremely useful subject which supports a wide range of other areas of study. It combines well with other subjects such as Psychology, History, Sociology and Biology. It is acknowledged by Higher Education Institutions as a versatile subject and is recognised as a valuable A Level, no matter what career path you choose.

## What will I study?

The two course year course covers **six compulsory units** (two in Y12 for AS and four in Y13 for A Level):

### AS Literature:

- **Component 1: Prose fiction: pre 1900.** (*Jane Eyre* by Charlotte Brontë) and **post 1900** (*A Room with a View* by E.M. Forster)
- **Component 2: Poetry and Drama. Poetry** (*Mean Time* by Carol Ann Duffy), **Drama** (*Dr Faustus* by Christopher Marlowe)

### A Level Literature

- **Component 1: Poetry. Pre 1900:** One choice from the following: Chaucer's *The Merchant's Prologue and Tale*, Donne's – *Selected Poetry*, Milton's – *Paradise Lost Book IX*, Keats – *Selected Poems* **or** Rossetti's - *Selected Poems*

**Post 1900** You will study **two** paired by P Larkin and C A Duffy

- **Component 2: Drama Shakespeare - *King Lear* and** a pair of plays, one pre 1900 and the other post 1900.
- **Component 3: Unseen texts**  
This unit allows you to reflect on the skills you have gained in other units and apply them to texts which you have not seen before.
- **Component 4: Prose study**  
This coursework unit is based on the reading of **two** prose texts by different authors, one published pre 2000 and the other published post 2000 of your own choice, subject to WJEC approval.

## How is the course assessed?

In Y12 the components are assessed through external exam. In Y13, component 6 is an internally marked assessment which is then moderated externally. The other units are all external exams.

## This course is for you if:

You have a real zest for understanding how literature helps shape our understanding of writers and their times and also for analysing how a writer crafts their work to achieve specific effects. You need to be able to work independently and be prepared to read around the subject. You also need to be well organised and motivated. At the end of the course you will be awarded an Advanced Level in English Literature graded A\* to E.

## What can I do next?

Your career opportunities after following an A Level English course are extensive. English offers you the opportunity to work in a number of fields such as: Journalism, Media, Librarianship, Education Health, Occupational Health, Sport and/or Nursery Nursing. Other avenues include: Nursing, Teaching and Social Work.



# Film

## Subject Overview

Film studies is so much more than what you might assume!

One of the bonuses of this course is that you all, already, have the skills to tackle it. These skills have been developed in English since you were in Year 7. The only difference now is that instead of books and plays you study films. You still need to consider context and analyse specific sections of the films but these skills are comfortingly familiar.

## What will I study?

### In Year 12...

**Unit 1:** a coursework unit where you choose a film that you want to write about and a creative piece that go together in a portfolio

**Unit 2:** an exam unit which looks at Hot Fuzz and Shaun of the Dead, and then Rocky IV and Million Dollar Baby.

### In Year 13...

**Unit 3:** another coursework unit with an analytical task and a creative one (similar to unit 1).

**Unit 4:** another exam unit but this looking at Texas Chainsaw Massacre and Candyman and then Fight Club.

## How is the course assessed?

Unit 1: internally assessed (worth 50% of AS and 25% A2)

Unit 2: 2 hours 30 minutes (worth 50% of AS and 25% A2)

Unit 3: internally assessed (worth 25% A2)

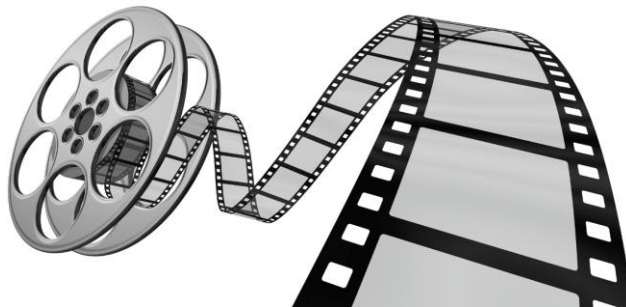
Unit 4: 2 hours 45 minutes (worth 25% A2)

## This course is for you if:

You enjoy watching films. You have enjoyed anything at all in English. If you enjoy watching British comedy films starring Simon Pegg, if you enjoy (or love being scared by) American horrors and if you love an underdog story then surely this course is for you.

## What can I do next?

This A-Level has been recognised by all universities for nearly 25 years. The UCAS points that you receive for this A-Level are the exact same as all others which means that university could definitely be your next step in film, media or English. Your options really are left wide open with this course. Not sure about university? The skills that you further develop (remember you've been working on them for the last 5 years) can be transferred to any form of writing, research, apprenticeship, or job. You name it, and this course fits it.







# French

## **Subject Overview**

The study of French at AS and A-level builds on the knowledge, understanding and skills gained at GCSE. It consists of an integrated study with a focus on the language, culture and society of France and other French-speaking communities. It is designed to develop a range of transferable skills including communication, critical thinking, research skills and creativity, which are valuable to the individual and society.

## **What will I study?**

You will focus on how French-speaking society has been shaped, socially and culturally, and how it continues to change. Aspects of the social context are studied, together with aspects of the artistic life of French-speaking countries.

The course is divided into two main themes – social issues, trends and political and artistic culture. Within in these themes you will read and be exposed to written and spoken articles relating to these topics as well as literature and cinema.

## **How is the course assessed?**

Three exams at the end of the course:

Paper 1 – Listening, reading and writing – 2 ½ hours – 40%

Paper 2 – Writing – 2 hours – 30%

Paper 3 – Speaking – 21-23 minutes – 30%

## **This course is for you if:**

You relish the challenge of taking your language learning further and examining in more detail the social, artistic and political aspects of France and the francophone world. If you love exploring other cultures and ways of life, including cinema, literature and contemporary culture. The content is suitable for students who wish to progress to employment or further study, including a modern languages degree.

## **What can I do next?**

A modern languages A-level, degree or degree course with a language study element can be useful in many different jobs including banking, finance, creative industries and the media, journalism, travel and hospitality, medicine, engineering, diplomatic corps, politics as well as the more obvious ones of translation, interpreting, teaching and many others.

A languages qualification can literally take you all over the world and can boost your earning potential as well.





# German

## **Subject Overview**

The study of German at AS and A-level builds on the knowledge, understanding and skills gained at GCSE. It consists of an integrated study with a focus on the language, culture and society of Germany and other German-speaking communities. It is designed to develop a range of transferable skills including communication, critical thinking, research skills and creativity, which are valuable to the individual and society.

## **What will I study?**

You will focus on how German-speaking society has been shaped, socially and culturally, and how it continues to change. Aspects of the social context are studied, together with aspects of the artistic life of German-speaking countries.

The course is divided into two main themes – social issues, trends and political and artistic culture. Within in these themes you will read and be exposed to written and spoken articles relating to these topics as well as literature and cinema.

## **How is the course assessed?**

Three exams at the end of the course:

Paper 1 – Listening, reading and writing – 2 ½ hours – 40%

Paper 2 – Writing – 2 hours – 30%

Paper 3 – Speaking – 21-23 minutes – 30%

## **This course is for you if:**

You relish the challenge of taking your language learning further and examining in more detail the social, artistic and political aspects of Germany. If you love exploring other cultures and ways of life, including cinema, literature and contemporary culture. The content is suitable for students who wish to progress to employment or further study, including a modern languages degree.

## **What can I do next?**

A modern languages A-level, degree or degree course with a language study element can be useful in many different jobs including banking, finance, creative industries and the media, journalism, travel and hospitality, medicine, engineering, diplomatic corps, politics as well as the more obvious ones of translation, interpreting, teaching and many others.

A languages qualification can literally take you all over the world and can boost your earning potential as well.





# Geography

## **Subject Overview**

Geography is the study of Earth's landscapes, peoples, places and environments. It is, quite simply, about the world in which we live.

Geography is unique in bridging the social sciences (human geography) with the natural sciences (physical geography). Human geography concerns the understanding of the dynamics of cultures, societies and economies, and physical geography concerns the understanding of the dynamics of physical landscapes and the environment.

Geography puts this understanding of social and physical processes within the context of places and regions - recognising the great differences in cultures, political systems, economies, landscapes and environments across the world, and the links between them. Understanding the causes of differences and inequalities between places and social groups underlie much of the newer developments in human geography.

Geography provides an ideal framework for relating other fields of knowledge. It is not surprising that those trained as geographers often contribute substantially to the applied management of resources and environments.

Geography is, in the broadest sense, an education for life and for living. Learning through geography – whether gained through formal learning or experientially through travel, fieldwork and expeditions – helps us all to be more socially and environmentally sensitive, informed and responsible citizens and employees.

## **What will I study?**

### **Component 1 – Physical Geography**

Water & carbon cycles.

Coastal systems and landscapes.

Hazards.

### **Component 2 – Human Geography**

Global systems and governance.

Changing places.

Population and the environment.

### **Component 3 – Geography Fieldwork Investi \_**

3,000 – 4,000 word investigation

Internally assessed question chosen by students for investigation.



## **How is the course assessed?**

Components 1 & 2 are externally assessed and Component 3 is internally assessed.

## **This course is for you if:**

Most geography graduates are numerate, literate, good team workers, can think analytically and critically, and are highly computer literate. Geography consistently attracts large numbers of high quality students with excellent A level grades.

## **What can I do next?**

You can go on to find employment in a vast range of occupations due to the data collection and analysis skills gained throughout the course. Many industries value this skill extremely highly areas such as data analyst, researcher. In addition to this there are employment opportunities in town planning and development as well as positions within education and research.



# History

## **Subject Overview**

A Level History has been one of the most popular A Level subjects at Campsmount. The A Level History course follows the AQA specification.

## **What will I study?**

At Campsmount we follow the AQA A Level History (7042) specification.

Our breadth study (Component 1) is an investigation into The Tudors: England, 1485 – 1603. This can be broken down into four key areas:

- 1) The consolidation of the Tudor dynasty under Henry VII
- 2) Changes in government, religion and society under Henry VIII
- 3) 'The Mid – Tudor Crisis'
- 4) 'The Golden Age' of Elizabeth I.

Our depth study (Component 2) is an investigation into Democracy and Nazism: 1918 – 1945. Key areas include:

- 1) The Weimar Republic's establishment, 'Golden Age' and collapse
- 2) The Nazi Dictatorship
- 3) The Racial State
- 4) The Impact of World War Two.

The final component (Component 3) is the Non – Examined Assessment, this represents students own personal study into a period of 100 years.

## **How is the course assessed?**

- Components 1 and 2 are both assessed through their own 2 hours 30 mins examination representing 40% of the qualification each
- Component 3 is assessed through a centre marked and AQA moderated personal study between 3,000 - 3,500 words

You will also be asked to present reports and conduct presentations throughout the course.

## **This course is for you if:**

You have a keen interest in History and have good argument and analytical based skills. The key skills required for the A Level are also highly valued for students who wish to pursue a career in law.

The course will suit students who are have good literacy and research based skills. The course has a real focus on reading and research. You need to be organised, be able to work to deadlines and be independent in your studies.

## **What can I do next?**

This qualification can lead to an undergraduate course at university, courses such as History, Politics and Law. Many universities prioritise prospective Law students with A Level History. History is both a valued and respected A Level with an excellent academic reputation.







# Mathematics

## Subject Overview

Mathematics is a stimulating and challenging subject which is very highly regarded at Advanced Level. Both employers and universities are keen to take you if you have successfully completed Year 12 or Year 13 Mathematics. The new assessment is linear which means that all examinations are at the end of the course. The Year 12 course which leads to an AS qualification, builds upon all GCSE work but particularly algebra. Students will also study both Mechanics and Statistics. To obtain the full A level qualification students will complete the Year 13 course, where the same topic areas as Year 12 are studied to a greater depth.

## What will I study?

- A: Proof
- B: Algebra and functions
- C: Coordinate geometry in the (x,y) plane
- D: Sequences and series
- E: Trigonometry
- F: Exponentials and logarithms
- G: Differentiation
- H: Integration
- J: Vectors
- K: Statistical sampling
- L: Data presentation and interpretation
- M: Probability
- N: Statistical distributions
- O: Statistical hypothesis testing
- P: Quantities and units in mechanics
- Q: Kinematics
- R: Forces and Newton's laws

## How is the course assessed?

The AS level course is assessed by 2 written papers of 1.5 hours each. Each paper is equally weighted.

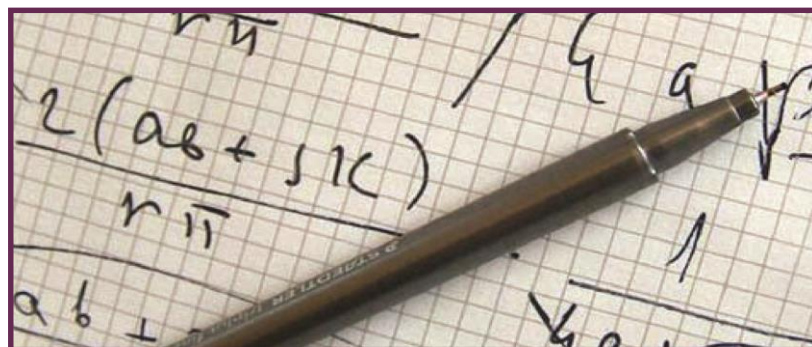
The A level course is assessed by 3 written papers of 2 hours each. Each paper is equally weighted.

## This course is for you if:

You are very confident working with algebra and enjoy complex multi-stage problems. If you have been successful at studying Higher level GCSE Mathematics.

## What can I do next?

Mathematics is a much sought after qualification for entry to a wide variety of careers and Higher Education courses. Examples include accountancy, law, teaching, engineering, IT, medicine, mathematics and computing.





# Philosophy & Ethics

## Subject Overview

The study of Philosophy and Ethics offers you an interesting and intellectually challenging A level.

Philosophy and Ethics helps develop understanding of spiritual, moral, ethical social and cultural studies. Throughout this course you will develop a variety of skills, including those of discussion and debate. The valuable skills of logical argument and critical evaluation are also developed and can be transferred to other areas of study.

## What will I study?

There are a number of possible themes to study in A level Philosophy and Ethics. Students may cover a selection of the following topics:

Utilitarianism, Situation Ethics, Value and quality of life both human and non-human, Abortion and Euthanasia, The Cosmological Argument, Religious Experience, Psychology and Religion including Freud: Religion as neurosis: wish fulfillment and helplessness and Jung: Religion as a collective consciousness: God within, Atheism and Postmodernism, Libertarianism, Free Will and Determinism, Virtue Ethics, Sexual Behaviour and Human Relationships and Science and Technology.

## How is the course assessed?

There are two exams each worth 50% of the overall grade. There is **NO** coursework in A level Philosophy and Ethics.

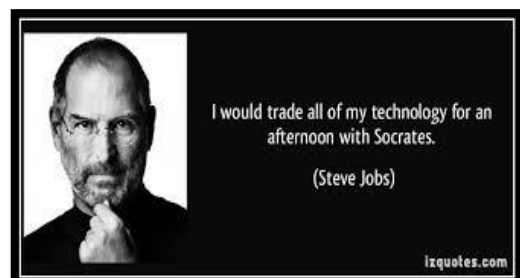
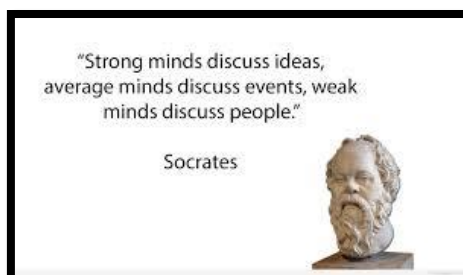
## This course is for you if:

You enjoy debates and group discussions, making your own judgements and expressing your views.

## What can I do next?

Philosophy and Ethics is highly regarded by universities and employers as it proves that you are able to think critically, discuss and evaluate. It is an excellent preparation for any humanities degree and most politicians take philosophy as part of their degree course.

A philosophy and ethics A-level, degree or degree course with a philosophical or ethics based element can be useful in many different jobs including Broadcast, film, video and interactive media, medicine, education, financial services, civil service, law, politics, publishing, social care or social work and journalism.





# Physics

## Subject Overview

Physics is the study of matter, energy, force and motion, which can challenge our imagination and lead to world-changing discoveries such as lasers and computers. The course itself covers key knowledge and practical skills which will prepare students for Physics related degrees at university. As an A Level Physics student you can expect to learn valuable, transferable skills such as problem solving and analysis.

## What will I study?

The course involves 8 compulsory units

- 1) Measurements and their errors
- 2) Particles and Radiation
- 3) Waves
- 4) Mechanics and materials
- 5) Electricity
- 6) Further mechanics and thermal physics
- 7) Fields and their consequences
- 8) Nuclear physics

And one of the following optional units

- 1) Astrophysics
- 2) Medical physics
- 3) Engineering physics
- 4) Turning points in physics
- 5) Electronics

## How is the course assessed?

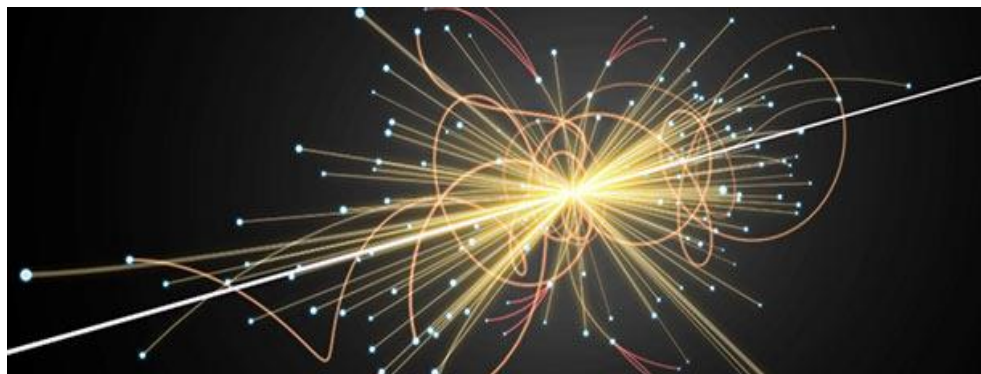
The course is assessed through 3 exams. These cover the content covered throughout the course. Within the 2 years each student also has to complete 12 compulsory practicals. These cover a wide range of skills. These also assessed in the final exams.

## This course is for you if:

You have a real interest and passion for Physics. You have the desire and passion to learn about how the world works. You will also need good GCSE Maths skills, a good work ethic and be keen to work on complex problems.

## What can I do next?

A Level Physics students are equipped with skills and knowledge that can transfer to a range of varied careers. You could choose to seek employment in engineering, medicine, forensics, sports science, geophysics, aeronautics, nanotechnology, research or teaching.





# Psychology

## Subject Overview

Psychology teaches you how to persuade everyone else that they are the strange ones! Psychology offers you the chance to develop your knowledge, to become insightful and to make a difference to those around you. I don't mean that you will develop superpowers, what I mean is that you will gain a depth of understanding of the issues that are prevalent in our society today. Psychology is a subject that intrigues and captivates. It offers you something new and exciting, something that you have not tackled before, something a little deeper than the average GCSE that you have experienced over the last few years.

## What will I study?

In Year 12...

Unit 1: Looks at obedience/prejudice and the cognitive approach

Unit 2: Looks at two specific approaches: the biological approach and the learning approach.

In Year 13...

Unit 3: Covers issues and debates using the four areas studied at AS level.

Unit 4: A synoptic unit focusing on two areas: criminal psychology and clinical psychology.

Practical aspect: Each unit has a practical element.

## How is the course assessed?

Each unit is assessed through an examination.

Unit 1: 1 hour 30 minutes

Unit 2: 1 hour 30 minutes

Unit 3: 2 hours

Unit 4: 2 hours

## This course is for you if:

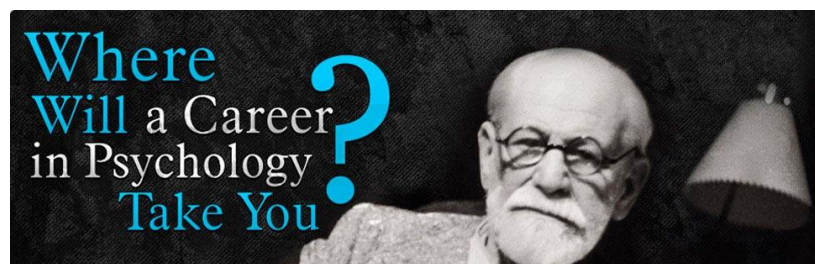
This course has a lot of content alongside the skills required for answering exam questions and carrying out practicals. However, you'll know that this course is for you if:

- you love a challenge and learning something new
- you have enjoyed learning and revising knowledge (English literature, science, history at GCSE for example)
- you enjoy exams
- you enjoy setting up and carrying out your own practicals (similar in some ways to science at GCSE)

Then this course is for you!

## What can I do next?

What would you like to do next? University courses focus on many different areas of psychology so that is one option. However, because of the nature of the course and the written skills that you develop alongside your time management and independent skills through your practicals it also makes a great basis for many sorts of jobs and apprenticeships.





# Applied Science BTEC Level 3

## **Subject Overview**

This two-year qualification is equivalent to 1 A Level and covers the key knowledge and practical skills required in preparation for a science based qualification in higher education.

This qualification lets you study a broad and stimulating science across all fields (Biology, Chemistry and Physics) with great emphasis placed in practical enquiry.

## **What will I study?**

The course will comprise of 3 compulsory units:

1. Principles and Applications of Science I.
2. Practical and Scientific Procedures and Technique.
3. Science investigation skills.

There is a further optional unit that must be completed that students can chose from. Some of these include:

1. Astronomy and Space Science.
2. Diseases and Infection.
3. Physiology of Human Body Systems

## **How is the course assessed?**

The course is assessed through a series of written assignments, practical skills assessments and examined units.

Unit 1: Principles and Applications of Science I, students are required to sit a 90 minute written exam which is worth 90 marks. The exam is split into three equal sections (Biology, Chemistry and Physics).

Unit 2: Practical and Scientific Procedures and Techniques: Students are required to complete a series of assignments to provide evidence for each grading criteria.

Unit 3: Science Investigation Skills, students are set a two-part task, where they have to complete an experiment under timed conditions, and then complete a written task based on their findings.

## **This course is for you if:**

- You have a natural interest and curiosity for Science
- You enjoy practical work that allows you to investigate key questions through quantitative experimental procedure.
- You enjoy analysing and interpreting data, using good mathematical skills.
- You are good at problem solving.
- You can work independently to develop sound subject knowledge and understanding.

## **What can I do next?**

BTEC level 3 is a recognised qualification in Science.







## Subject Overview

Business Studies is one of the most popular and successful courses in the sixth form. The course combines theory and practice through coursework and exams.

## What will I study?

The course allows you to study theories and apply them to real life companies, covering the following themes:

- Marketing
- Business Ethics
- Human Resource Management
- Finance
- Economics

## How is the course assessed?

The course requires you to study 4 units (for 1 A level) or 6 units (for 1.5 A levels). Some of the units will be mandatory with the opportunity to focus on specific optional units.

- For the 4 unit course; 2 units are coursework and 2 units are exams.
- For the 6 unit course; 4 units are coursework and 2 units are exams.

You will also be asked to present reports and conduct presentations throughout the course.

## This course is for you if:

You have a keen interest in running your own business or wanting to have a real insight into how modern companies operate.

The course will also suit you if you aren't too keen on end of year examinations and can maintain a high level of work throughout the two years. You need to be organised, be able to work to deadlines and be independent in your studies.

## What can I do next?

Business is all around you and so the content and skills you develop are transferable to whatever you do in life. It is a subject in demand by both universities and employers alike.





# Dance BTEC Level 3

## **Subject Overview**

This course covers the key knowledge and practical skills required in preparation for working in the Dance or Performing Arts industry or going on to a Performing Arts-related degree course at university. This qualification lets you study a broad and stimulating curriculum consisting of a mixture of practical and theoretical work that is relevant to today's Dance and Performing Arts industry.

## **What will I study?**

The course will involve a combination of mandatory and optional units.

### Mandatory units

- Investigating Practitioners Work
- Developing Skills and Techniques for Live Performance
- Group Performance Workshop

### Optional Units

- Classical Ballet Technique; Tap Dance Technique, Jazz Dance Technique; Street Dance Technique, Contemporary Dance Technique.

## **How is the course assessed?**

The course is assessed using a variety of methods: Assignments, tasks and Performances.

*Performances* of choreographed pieces will be performed in front of live audiences and teacher-assessors. *Assignments* involve students completing a series of tasks set in a work-related scenario, which you can tailor to local industry needs. Students will generate authentic-evidence, drawing on their knowledge and skills to complete a practical project over a period of time, working either individually or in a team. *Tasks* have to be completed in controlled conditions and tackle an everyday challenge; some tasks also draw on pre-released information.

## **This course is for you if:**

You have a real interest and passion for dance. You will also be interested in the organisation, choreography and performance of dance. You will also need to be organised and be able to work to deadlines.

## **What can I do next?**

You could go on to find employment within the Dance Industry, either performing on stage, choreographing group or individual performances or teaching. This qualification can also lead to an undergraduate dance course at university, with the Universities accepting the BTEC Level 3 qualifications alongside other BTECs or A Levels. The course can also contribute UCAS points towards non-dance-related university courses.





# Health & Social Care BTEC Level 3

## Subject Overview

This two-year qualification is equivalent to at least 1.5 A Levels and covers the key knowledge required in preparation for a Health and Social Care, teaching or health based degree course at university.

This qualification lets you study a broad and stimulating curriculum consisting of 6 - 13 units over the two years that are relevant to modern day Health and Social Care roles. You will undertake a mixture of work experience and theoretical work which will be assessed through external examinations and internally set and assessed assignments.

## What will I study?

The course will comprise of compulsory and optional units. These will include units such as:

- Human Lifespan Development
- Working in Health and Social Care
- Care and Support Planning in Health and Social Care Practice
- Anatomy and Physiology
- Meeting Individual Care and Support Needs
- Keeping Individuals Safe in Health and Social Care
- Settings

## How is the course assessed?

The course is assessed in three ways:

1. Units may be taught and examined externally by the exam board
2. Assignment units that are set and marked by the exam board
3. Assignment units that are set and marked internally by your teaching staff

The number of units you complete will be dependent on the size of your qualification. Those requiring to undertake a work placement will also receive a report of their competence at the end of their placement from their employer.

## This course is for you if:

- You learning about how to care for people of all ages.
- You have good organisation skills to balance the different demands of the course.
- You work well with others.
- You are able to work to deadlines.

## What can I do next?

Health and Social Care is a well-respected qualification that is recognised by employers in the Health and Social Care sector and by universities. Many of our past students have gone on to train as primary/early year's teachers, nursing and degrees within the health care sector.

For further information please speak to Miss Hudson, Mrs Dawson or Mrs Guest to check your suitability to study this course.



### **Subject Overview**

This two-year qualification is equivalent to 1 A Level and covers the key knowledge and practical skills required in preparation for working in the ICT industry or going on to an ICT related degree course at university.

This qualification lets you study a broad and stimulating curriculum consisting of 5 units over the two years that are relevant to today's ICT industry. You will undertake a mixture of practical and theoretical work which is assessed by a blend of external examinations and coursework based.

### **What will I study?**

The course will involve the following six units:

- 1) Fundamentals of IT (External Examination)
- 2) Global Information (External Examination)
- 3) Computer Networks (Portfolio of Evidence)
- 4) Computer Systems – Hardware (Portfolio of Evidence)
- 5) Computer Systems – Software (Portfolio of Evidence)

### **How is the course assessed?**

Two units are external examinations, which may be based on a case study. Each Portfolio of Evidence unit is assessed internally and will show your understanding and the completion of tasks to a specific standard. The units will be presented as a portfolio of evidence which may include tasks such as demonstrating practical skills, reports, interviews, audio and video recordings, essays and presentation tasks and projects. At the end of the course you will be awarded a pass, merit, distinction or distinction\*. Students must achieve at least a pass in all 5 units to achieve a final grade.

### **This course is for you if:**

You have a real interest and passion for ICT. You will also be interested in the how organisations use ICT, willing to learn skills in a variety of software applications as well as in interest in how computers work.

You will need to be well organised and be able to work to deadlines.

### **What can I do next?**

This qualification is designed to enable learners to enter employment, including the following routes:

- 1) enter employment
- 2) enter employment and undertake a related qualification at a level appropriate to the job role
- 3) enter employment and undertake other related occupational qualifications.

This qualification will also enable the learner to progress to further education/higher education in the same or related areas in the Qualifications and Credit Framework (QCF) and from the National Qualifications Framework (NQF) to further develop their skills, knowledge and understanding in the field of ICT.





## Subject Overview

"The media's the most powerful entity on earth. They have the power to make the innocent guilty and to make the guilty innocent, and that's power. Because they control the minds of the masses." Malcolm X

BTEC Creative Media production is a two year course and you will achieve 1.5 A-Levels. We look at various aspects of the media starting at pre-production and working our way up to production. Our focus is on a particular scenario and brief that we work to across the majority of units, for example creating a promotional package for a new fictitious film magazine that is due to be launched. This means that we are able to look at different interconnected areas like writing copy, financing projects, managing projects, holding pre-production meetings, presenting and pitching ideas as well as market research.

## What will I study?

The course will involve **four compulsory units**:

- Media representations (in Y12)
- Pre-production portfolio (in Y12)
- Responding to a commission (in Y12)
- Media campaigns (in Y13)

And **two further optional units** from a wide range that includes:

- Digital magazine production (in Y12)
- Advertising production (in Y13)

## How is the course assessed?

Two units are externally assessed. This can be through an online test or through a piece of coursework that is sent away to be marked. All other aspects are internally assessed. For each unit there are approximately 3 tasks that feed in to each other and require you to collect together some evidence for a portfolio. The evidence does not necessarily need to be written, it could be pictorial, and it could be in the form of an oral presentation or a blog. This is an opportunity for you to make the decision how you want to be assessed and in what form.

## This course is for you if:

You don't necessarily perform well in exams or if you prefer coursework. If you like something where you can not only learn new skills but put them into practice as well.

## What can I do next?

There are many, many different opportunities that are opened up when studying a BTEC. Obviously, the first one is university. The UCAS points that you get from a BTEC, work in the same way as they do for an A-Level. Apprenticeships, internships or jobs are another way of going. The skills that you learn through a BTEC are largely practical so you already have experience of an industry that can be applied to almost all jobs on the market.







# Music Performance BTEC Level 3

## **Subject Overview**

This course gives you a wealth of musical experiences and transferable skills, preparing you to continue to undergraduate study or to the workplace. The course covers the key knowledge and practical skills required in preparation for working in the music or performing arts Industry or going on to a music-related degree course at university. This qualification lets you study a broad and stimulating curriculum consisting of a mixture of practical and theoretical work.

## **What will I study?**

The course will involve a combination of mandatory and optional units.

### Mandatory units

- Music performance brief
- Music skills development
- Music composition brief
- Professional practice in the music industry

### Optional Units

- Arranging music; Composing music; Music promotion; Solo performance; Music ensembles; Music software skills.

## **How is the course assessed?**

The course is assessed using a variety of methods: Assignments, tasks and Performances.

*Performances* of rehearsed pieces will be performed in front of live audiences and teacher-assessors. *Assignments* involve students completing a series of tasks set in a work-related scenario, which you can tailor to local industry needs. Students will generate authentic-evidence, drawing on their knowledge and skills to complete a practical project over a period of time, working either individually or in a team. *Tasks* have to be completed in controlled conditions and tackle an everyday challenge; some tasks also draw on pre-released information.

## **This course is for you if:**

You have a real interest and passion for composing and performing Music. You will also be interested in music production and promotion. You will need to be organised and be able to work to deadlines.

## **What can I do next?**

There are a variety of pathways open to those who complete this course. You can progress to a Music degree and Universities will accept the BTEC Level 3 qualifications alongside other BTECs or A Levels. Alternatively, you could use your skill set to gain employment within the Music industry. The course can also contribute UCAS points towards non-music-related university courses.





# Photography BTEC Level 3

## **Subject Overview**

OCR Technicals Level 3 Art & Design Photography is a two year qualification leading to a Diploma (A Level equivalent).

## **What will I study?**

The course comprises of 6 units:

- Artists in Context (compulsory unit)
- Exploring Digital Photography (skills based)
- Portrait Photography
- Landscape Photography
- Artists as Photographers
- Digital Image Creation

## **How is the course assessed?**

Each unit is assessed internally and will be an evidence based assessment to show understanding and the completion of tasks to a specific standard.

Each unit is presented as portfolio evidence and is moderated by an external examiner after which an award of either Pass, Merit, Distinction or Distinction \* is given.

## **This course is for you if:**

You have a genuine interest in improving your digital photography skills. You enjoy manipulating images in an industry standard software (Adobe Photoshop) and you are prepared to work outside of the classroom planning and taking photographs relevant to the unit you are studying. There are no end of course exams, but it is imperative that you work at a very high standard throughout. Sound planning and organisation of time are essential ingredients if you wish to achieve at the highest level.

## **What can I do next?**

A Vocational Qualification designed with the workplace in mind. UCAS points available at Level 3 to support progression to Higher Education.





# Sport BTEC Level 3

## Subject Overview

This course covers the key knowledge and practical skills required in preparation for working in the sports industry or going on to a sports-related degree course at university.

This qualification lets you study a broad and stimulating curriculum consisting of a mixture of practical and theoretical work.

## What will I study?

The course will involve a combination of mandatory and optional units.

### Mandatory units

- Anatomy and Physiology.
- Fitness Training and Programming for Health, Sport and Well-being.
- Professional Development in the Sports Industry

### Optional Units

- Application of fitness testing and training
- Sports Psychology
- Sports Leadership
- Practical Sports Performance

## How is the course assessed?

The course is assessed using a variety of methods: Assignments, tasks and Written Exams.

*Assignments* involve students completing a series of tasks set in a work-related scenario, which you can tailor to local industry needs. Students will generate authentic-evidence, drawing on their knowledge and skills to complete a practical project over a period of time, working either individually or in a team. *Tasks* have to be completed in controlled conditions and tackle an everyday challenge; some tasks also draw on pre-released information. In the *written exam*, students will need to draw on essential information to create written answers to practical questions in test conditions.

## This course is for you if:

You have a real interest and passion for fitness and exercise. You will also be interested in the organisation of and performance in sport. You will need to be organised and be able to work to deadlines.

## What can I do next?

You could go on to find employment within the sports industry or progress to undergraduate sports courses at University. Universities will accept the BTEC Level 3 qualifications alongside other BTECs or A Levels. The course can also contribute UCAS points towards non-sport-related university courses.





# Your Sixth Form...Your Future

## Why Campsmount?

- Broad Range of Academic and Applied General Qualifications
- High quality teaching and learning
- Outstanding state of the art specialist facilities
- Sixth Form specific ICT and study facilities
- Outstanding support network
- Wide range of EDGE opportunities
- Dedicated Sixth Form catering and social facilities
- Small class sizes

---

## How to Apply?

### 4 October 2016

- Open Evening 5.30pm – 8.00pm

### October – November 2016

- Meet with Staff
- Initial Choices
- Research Higher Education
- Drop-in sessions to Sixth Form lessons

### 28 November 2016

- Application form deadline
- Initial choices are finalised
- Student choices passed on to Head of Faculty

### December 2016

- Feedback to students regarding subject choices
- Letters home

### Week Commencing 3 January 2017

- Sixth Form interviews

### Week Commencing 30 January 2017

- Letter sent home confirming final choices and offer

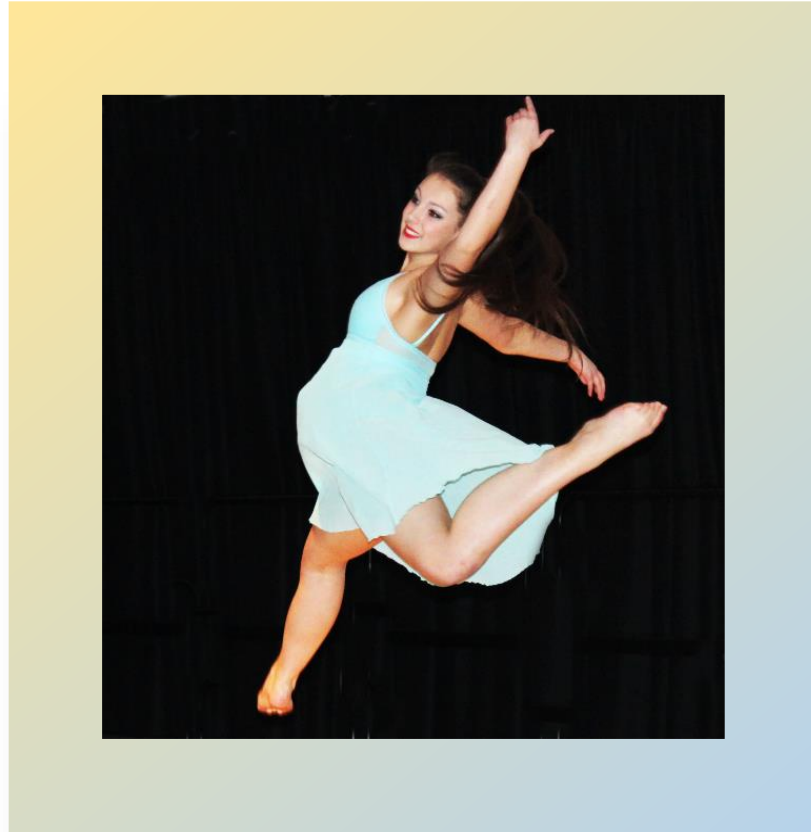
### August 2017

- GCSE exam results day. Interviews and enrolment.



## NOTES





**Campsmount (A Co-operative Academy)**

**Ryecroft Road**

**Norton**

**Doncaster**

**DN6 9AS**

**Tel: 01302 700002**

**email: [heads.pa@campsmount.com](mailto:heads.pa@campsmount.com)**

**Web: [www.campsmount.com](http://www.campsmount.com)**